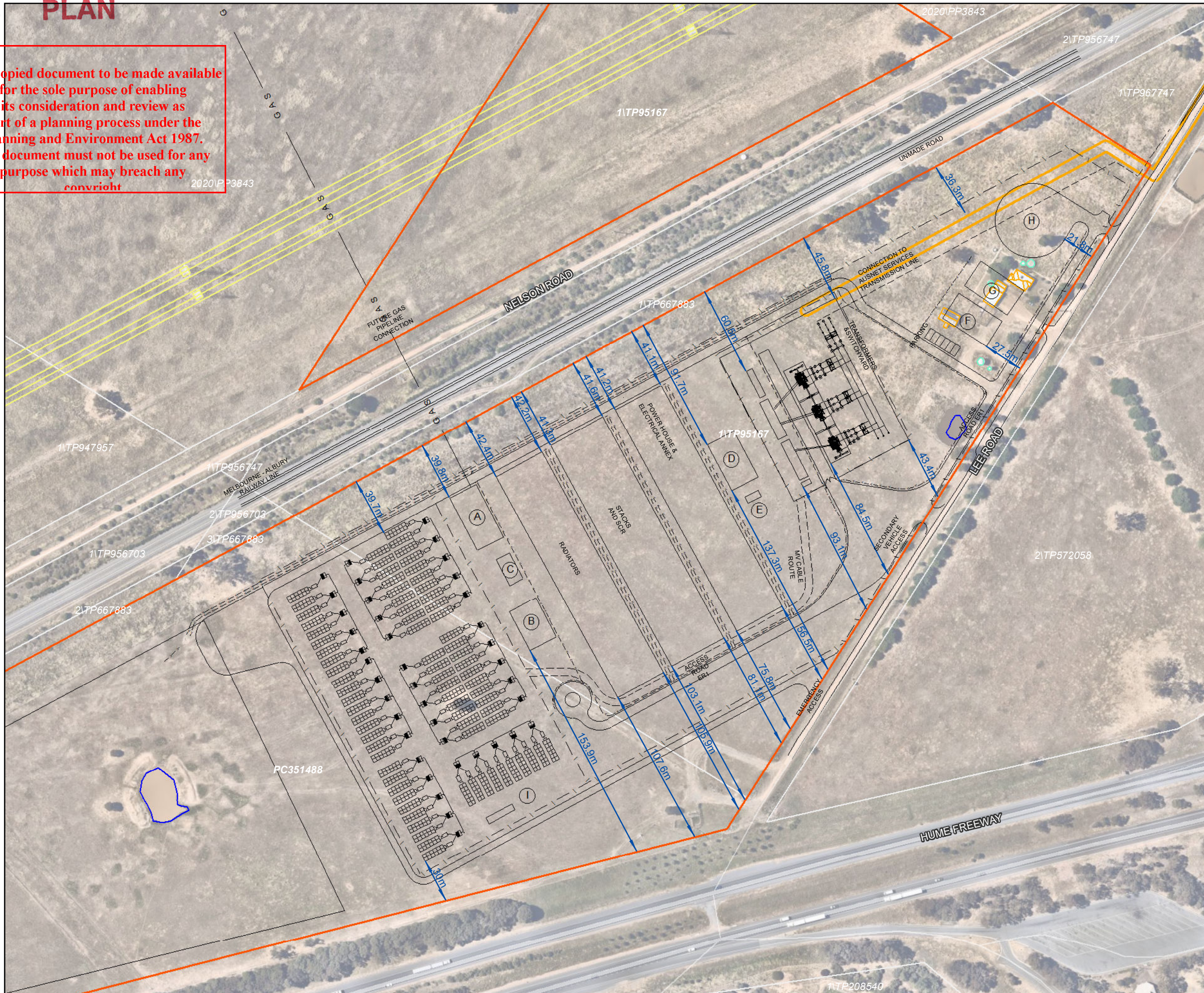


# ADVERTISED PLAN

This copied document to be made available for the sole purpose of enabling its consideration and review as part of a planning process under the Planning and Environment Act 1987. The document must not be used for any purpose which may breach any copyright

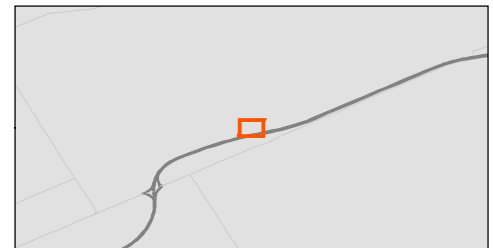


Lochard Energy Reserve 1 Facility: Winton

## Appendix A Concept Layout Plan

- A GPRS
- B Lube oil and water tanks
- C Fire pumps
- D AC and DC room
- E DG
- F Admin building
- G Workshop
- H Space for large vehicle turning and parking
- I Bess ASB
- Setbacks
- Concept design
- Electrical lines
- Gas pipeline
- Site drainage
- Fence
- Existing dam
- Existing building
- Existing overhead powerlines
- Existing tank
- New Transmission Footprint
- Project area
- Cadastre

# ADVERTISED PLAN



0 20 40 60 80 100 Meters

Coordinate system: GDA2020 MGA Zone 55  
 Scale ratio correct when printed at A3  
 1:2,500 Date: 16/02/2023

Data sources: DELWP, Geoscience Australia, Nearmap

© WSP Australia Pty Ltd ("WSP") Copyright in the drawings, information and data recorded ("the information") is the property of WSP. This document and the information are solely for the use of the authorised recipient and this document may not be used, copied or reproduced in whole or part for any purpose other than that which it was supplied by WSP. WSP makes no representation, undertakes no duty and accepts no responsibility to any third party who may use or rely upon this document or the information. NCSI Certified Quality System to ISO 9001. © APPROVED FOR AND ON BEHALF OF WSP Australia Pty Ltd.

This copied document to be made available for the sole purpose of enabling its consideration and review as part of a planning process under the Planning and Environment Act 1987. The document must not be used for any purpose which may breach any copyright

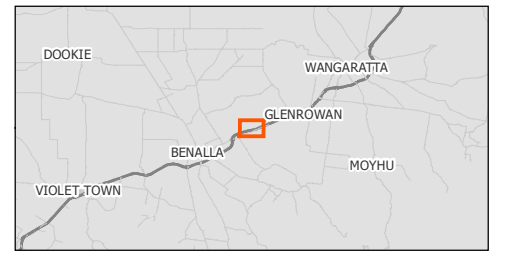


Lochard Energy Reserve 1 Facility: Winton

Figure 1 Proposed Project Location

- Watercourse
- Current Study
- Original Project
- Current Project

# ADVERTISED PLAN



0 100 200 300 400 Meters

Coordinate system: GDA 1994 MGA Zone 55  
Scale ratio correct when printed at A3  
1:15,000 Date: 12/01/2023

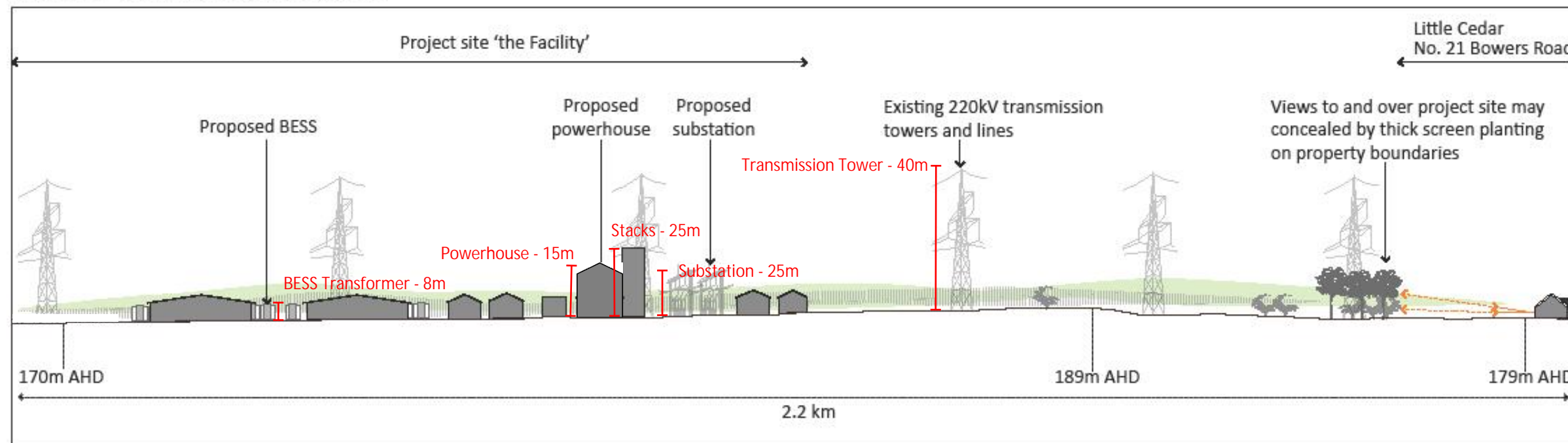
Data sources: - DELWP, Geoscience Australia

© WSP Australia Pty Ltd ("WSP") Copyright in the drawings, information and data recorded ("the information") is the property of WSP. This document and the information are solely for the use of the authorised recipient and this document may not be used, copied or reproduced in whole or part for any purpose other than that which it was supplied by WSP. WSP makes no representation, undertakes no duty and accepts no responsibility to any third party who may use or rely upon this document or the information. NCSI Certified Quality System to ISO 9001. © APPROVED FOR AND ON BEHALF OF WSP Australia Pty Ltd.

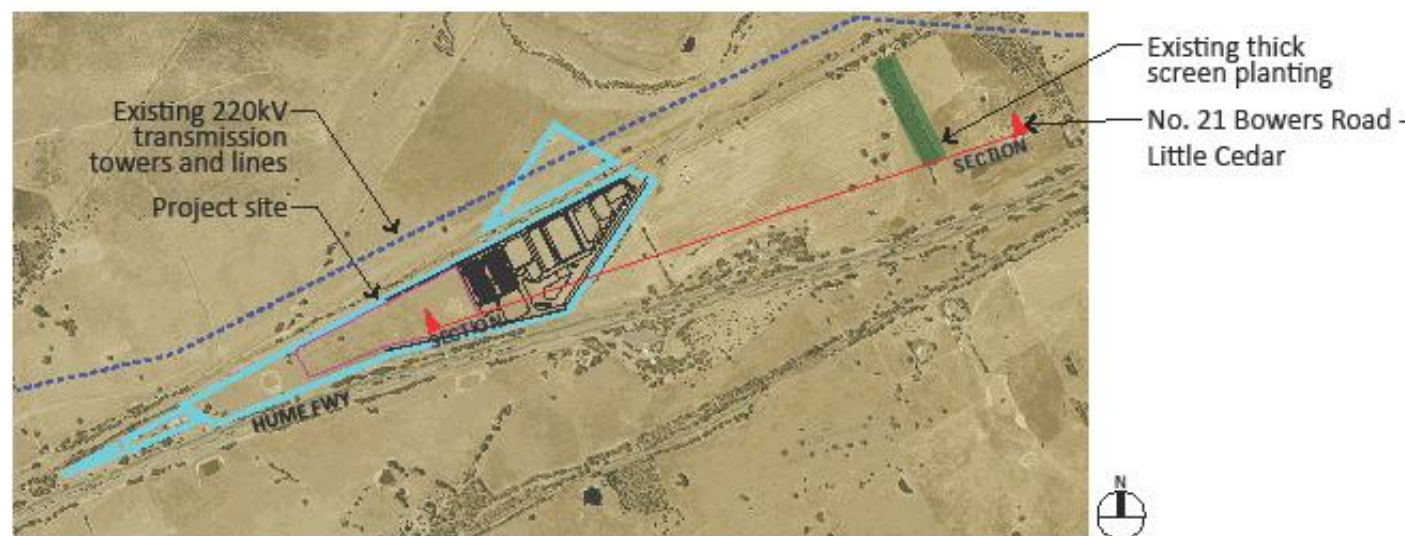
This copied document to be made available for the sole purpose of enabling its consideration and review as part of a planning process under the Planning and Environment Act 1987. The document must not be used for any purpose which may breach any copyright

ILLUSTRATIVE ONLY

SECTION 1 - Sensitive Receptor 01 (SR 01)



Based on previous concept design



ADVERTISED PLAN

TITLE Section - Sensitive Receptor 01 (SR 01)

PROJECT Winton Energy Reserve 1 Facility

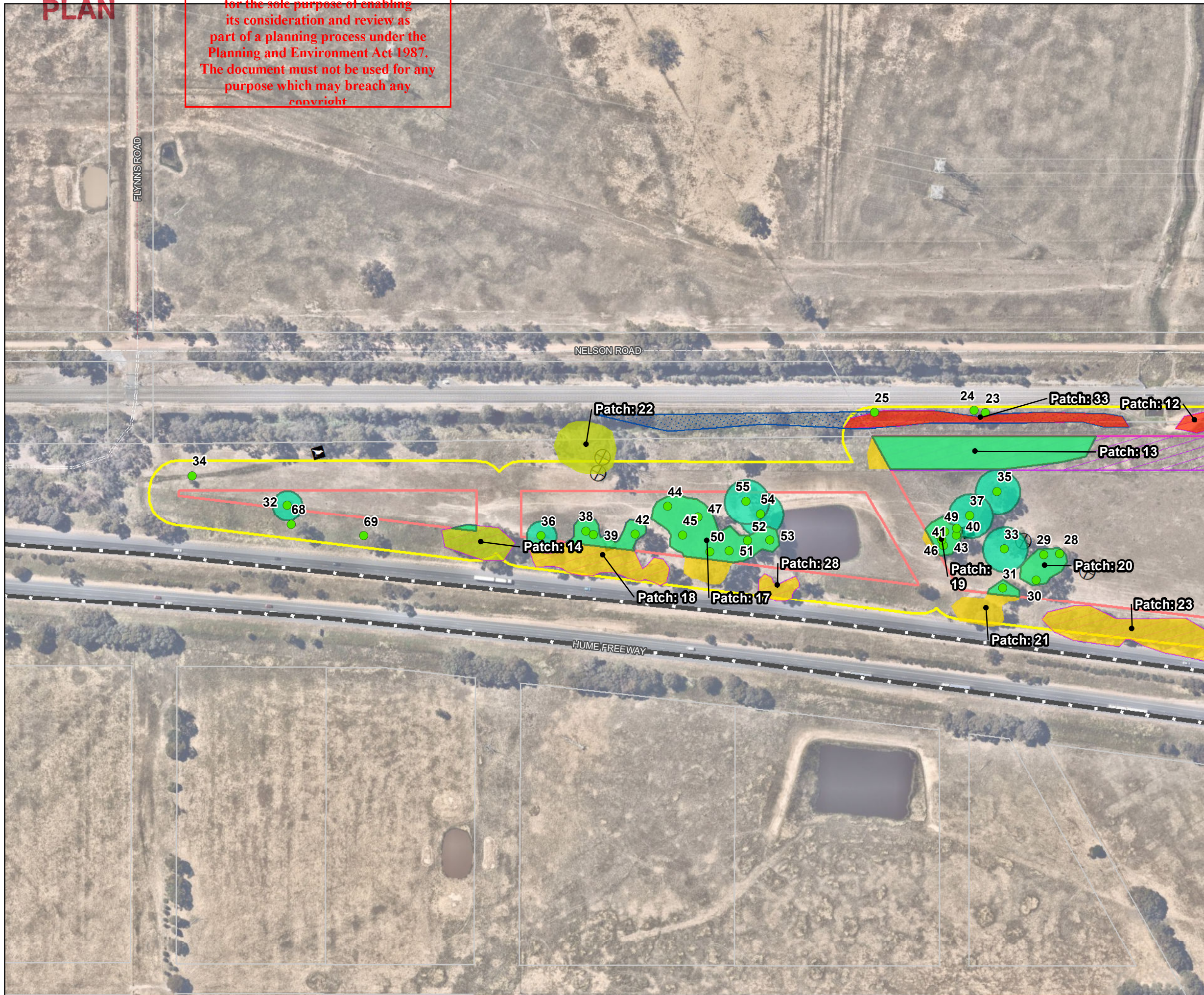
DWG NO	SCALE	SHEET NO	REVISION
HD_Y003_section	-	-	-

DRAWN	CHECKED	DATE
SW	SRH	12/21



Hemisphere Design (Aust) Pty Ltd  
 PO BOX 838 MITCHAM CENTRE,  
 TORRENS PARK SA 5062  
 P 08 8277 7640  
 E admin@hemispheredesign.com.au  
 ACN 114 303 936

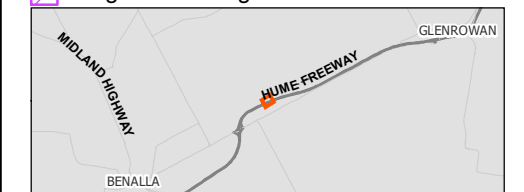
This copied document to be made available for the sole purpose of enabling its consideration and review as part of a planning process under the Planning and Environment Act 1987. The document must not be used for any purpose which may breach any copyright



**Lochard Energy Reserve 1 Facility: Winton**

**Figure 3**  
Detailed Assessment –  
Ecological Values and Proposed Impacts

- Frog proof fence recommendation
- Watercourse
- Transmission Footprint
- Project area
- Study area
- Original Project
- Cadastre boundaries
- EnSym - Native vegetation removal
- Stagwatch locations
- Woodland bird point surveys
- EPBC Community impacts
- Trees**
- Removed
- Retained
- Native Vegetation**
- Box Ironbark Forest
- Plains Woodland / Herb-rich Gilgari Wetland
- Plains Grassy Woodland
- Plains Woodland
- Spike-sedge Wetland
- Tall Marsh
- Vegetation to be retained
- Fauna Habitat**
- Aquatic - deep marsh
- Aquatic - shallow marsh
- Revegetation**
- Exotic revegetation
- Indigenous revegetation



Coordinate system: GDA 1994 MGA Zone 55  
 Scale ratio correct when printed at A3  
 1:2,500 Date: 13/01/2023  
 Data sources: - DELWP, Geoscience Australia

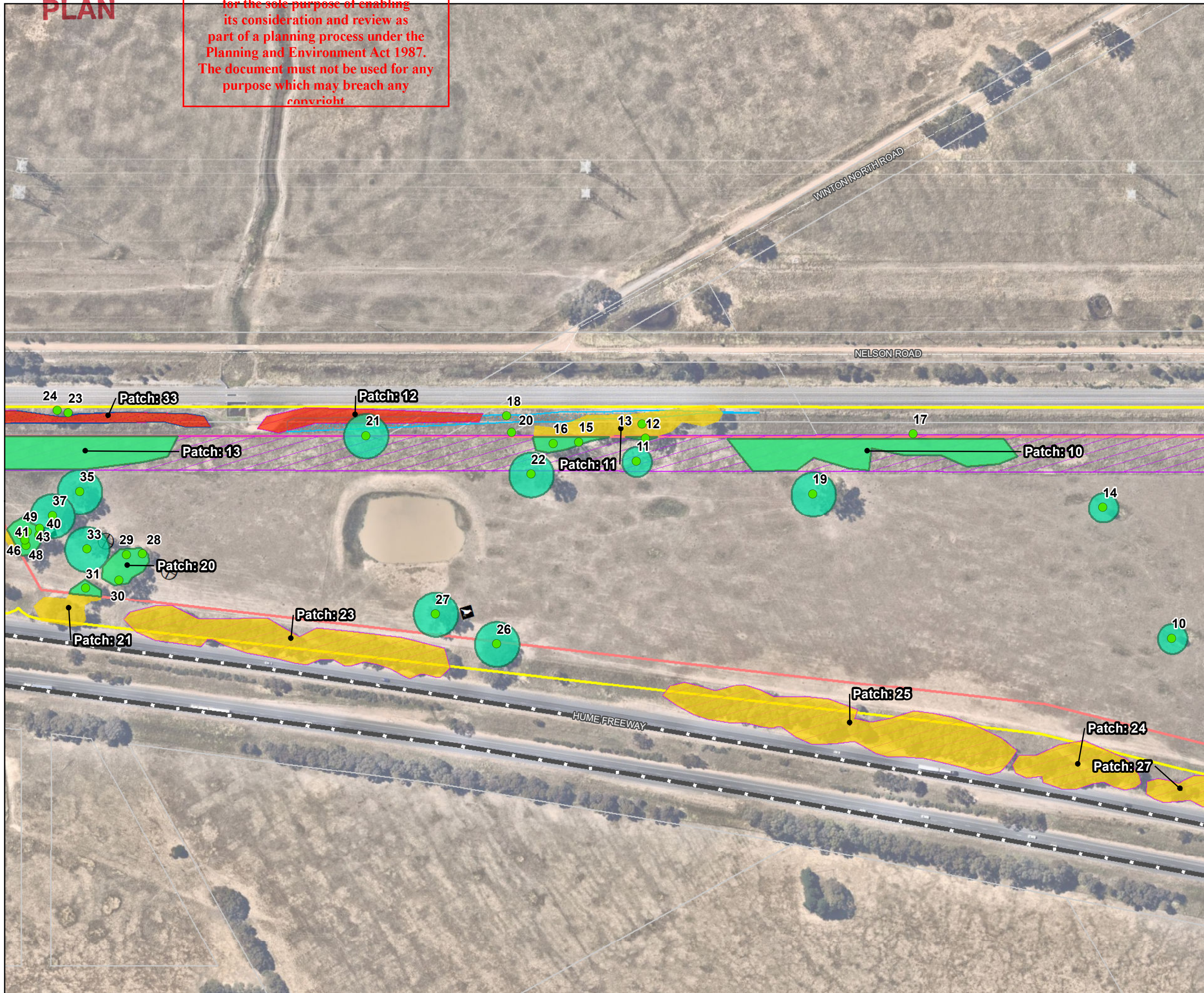
© WSP Australia Pty Ltd ("WSP") Copyright in the drawings, information and data recorded ("the information") is the property of WSP. This document and the information are solely for the use of the authorised recipient and this document may not be used, copied or reproduced in whole or part for any purpose other than that which it was supplied by WSP. WSP makes no representation, undertakes no duty and accepts no responsibility to any third party who may use or rely upon this document or the information. NCSI Certified Quality System to ISO 9001. © APPROVED FOR AND ON BEHALF OF WSP Australia Pty Ltd.

This copied document to be made available for the sole purpose of enabling its consideration and review as part of a planning process under the Planning and Environment Act 1987. The document must not be used for any purpose which may breach any copyright

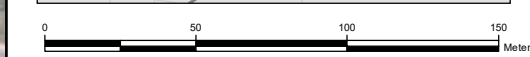


**Lochard Energy Reserve 1 Facility: Winton**

**Figure 3**  
Detailed Assessment – Ecological Values and Proposed Impacts



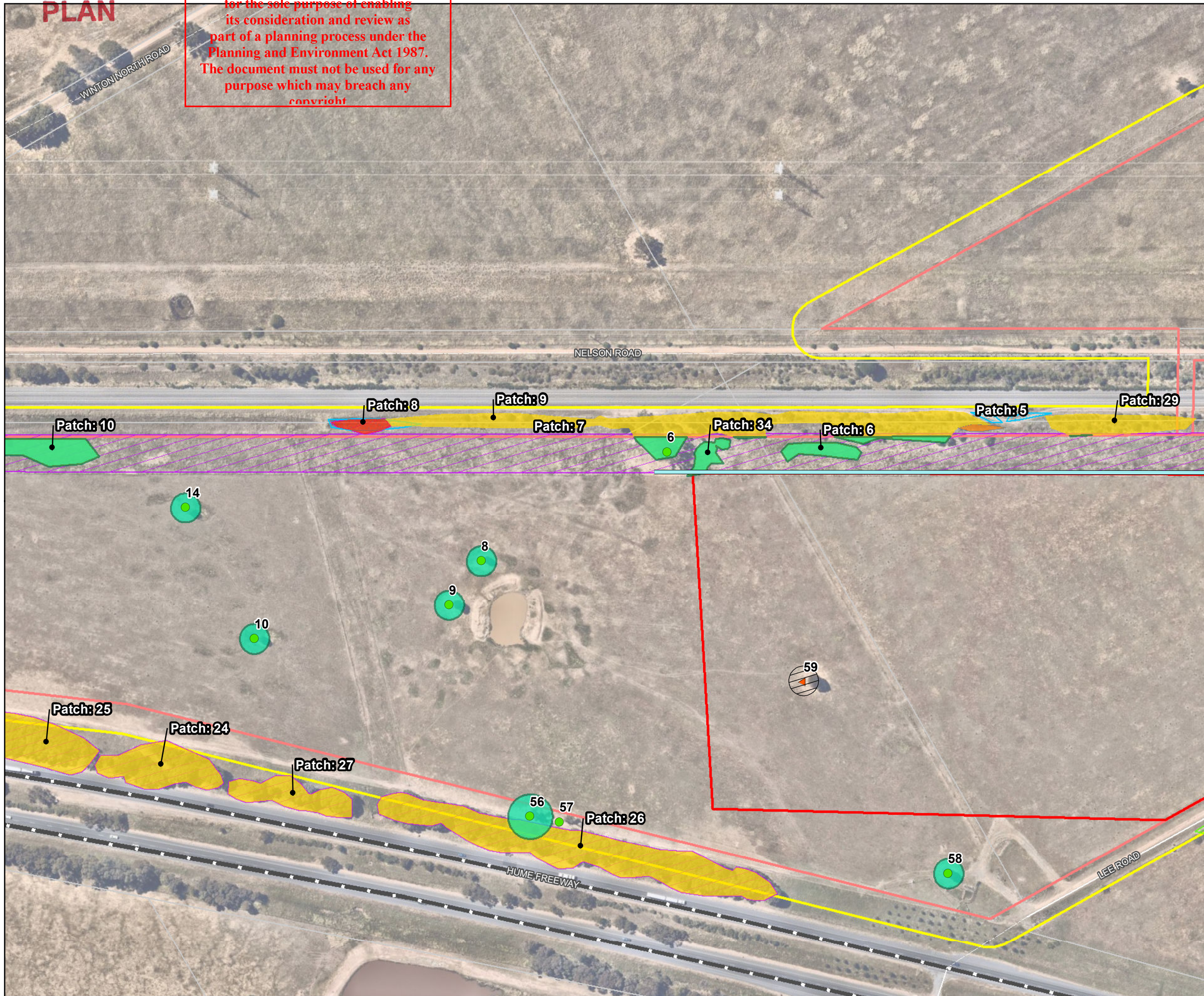
- Frog proof fence recommendation
  - Watercourse
  - Transmission Footprint
  - Project area
  - Study area
  - Original Project
  - Cadastre boundaries
  - EnSym - Native vegetation removal
  - ⊕ Stagwatch locations
  - ◆ Woodland bird point surveys
  - EPBC Community impacts
- Trees**
- ▲ Removed
  - Retained
- Native Vegetation**
- Box Ironbark Forest
  - Plains Woodland / Herb-rich Gilgai Wetland
  - Plains Grassy Woodland
  - Plains Woodland
  - Spike-sedge Wetland
  - Tall Marsh
  - Vegetation to be retained
- Fauna Habitat**
- Aquatic - deep marsh
  - Aquatic - shallow marsh
- Revegetation**
- Exotic revegetation
  - Indigenous revegetation



Coordinate system: GDA 1994 MGA Zone 55  
 Scale ratio correct when printed at A3  
 1:2,500 Date: 13/01/2023  
 Data sources: - DELWP, Geoscience Australia

© WSP Australia Pty Ltd ("WSP") Copyright in the drawings, information and data recorded ("the information") is the property of WSP. This document and the information are solely for the use of the authorised recipient and this document may not be used, copied or reproduced in whole or part for any purpose other than that which it was supplied by WSP. WSP makes no representation, undertakes no duty and accepts no responsibility to any third party who may use or rely upon this document or the information. NCSI Certified Quality System to ISO 9001. © APPROVED FOR AND ON BEHALF OF WSP Australia Pty Ltd.

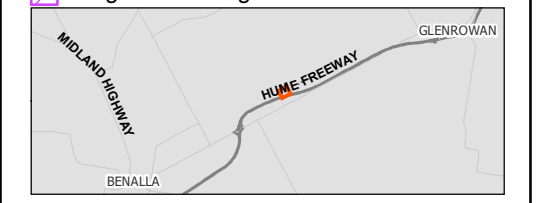
This copied document to be made available for the sole purpose of enabling its consideration and review as part of a planning process under the Planning and Environment Act 1987. The document must not be used for any purpose which may breach any copyright



**Lochard Energy Reserve 1 Facility: Winton**

**Figure 3**  
Detailed Assessment – Ecological Values and Proposed Impacts

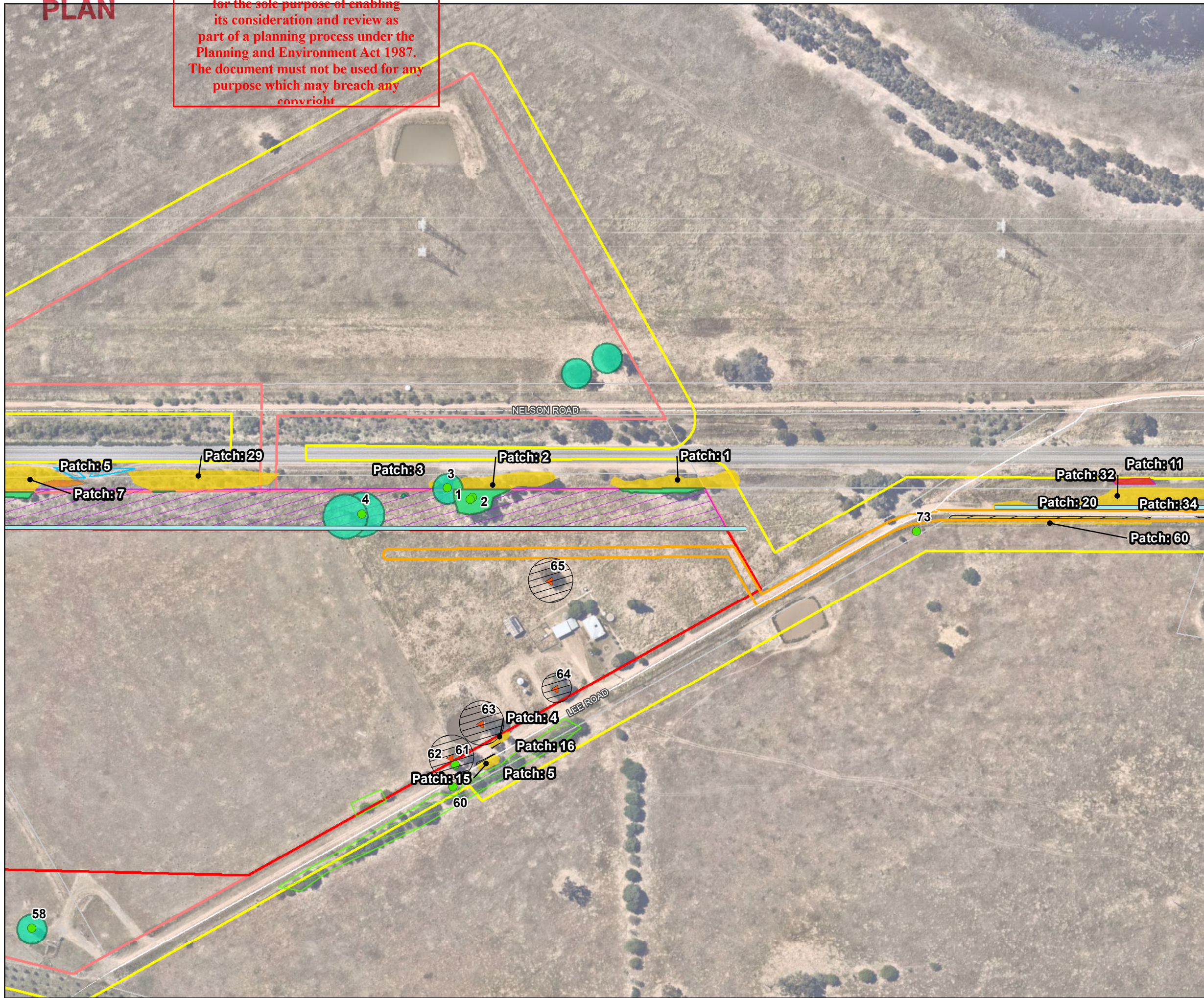
- Frog proof fence recommendation
- Watercourse
- Transmission Footprint
- Project area
- Study area
- Original Project
- Cadastre boundaries
- EnSym - Native vegetation removal
- Stagwatch locations
- Woodland bird point surveys
- EPBC Community impacts
- Trees**
- Removed
- Retained
- Native Vegetation**
- Box Ironbark Forest
- Plains Woodland / Herb-rich Gilgai Wetland
- Plains Grassy Woodland
- Plains Woodland
- Spike-sedge Wetland
- Tall Marsh
- Vegetation to be retained
- Fauna Habitat**
- Aquatic - deep marsh
- Aquatic - shallow marsh
- Revegetation**
- Exotic revegetation
- Indigenous revegetation



Coordinate system: GDA 1994 MGA Zone 55  
 Scale ratio correct when printed at A3  
 1:2,500 Date: 13/01/2023  
 Data sources: - DELWP, Geoscience Australia

© WSP Australia Pty Ltd ("WSP") Copyright in the drawings, information and data recorded ("the information") is the property of WSP. This document and the information are solely for the use of the authorised recipient and this document may not be used, copied or reproduced in whole or part for any purpose other than that which it was supplied by WSP. WSP makes no representation, undertakes no duty and accepts no responsibility to any third party who may use or rely upon this document or the information. NCSI Certified Quality System to ISO 9001. © APPROVED FOR AND ON BEHALF OF WSP Australia Pty Ltd.

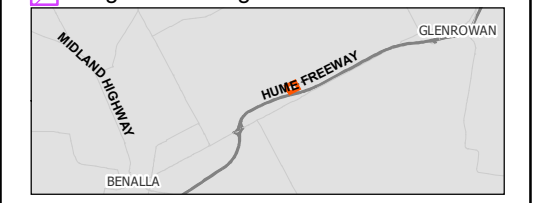
This copied document to be made available for the sole purpose of enabling its consideration and review as part of a planning process under the Planning and Environment Act 1987. The document must not be used for any purpose which may breach any copyright



**Lochard Energy Reserve 1 Facility: Winton**

**Figure 3**  
Detailed Assessment – Ecological Values and Proposed Impacts

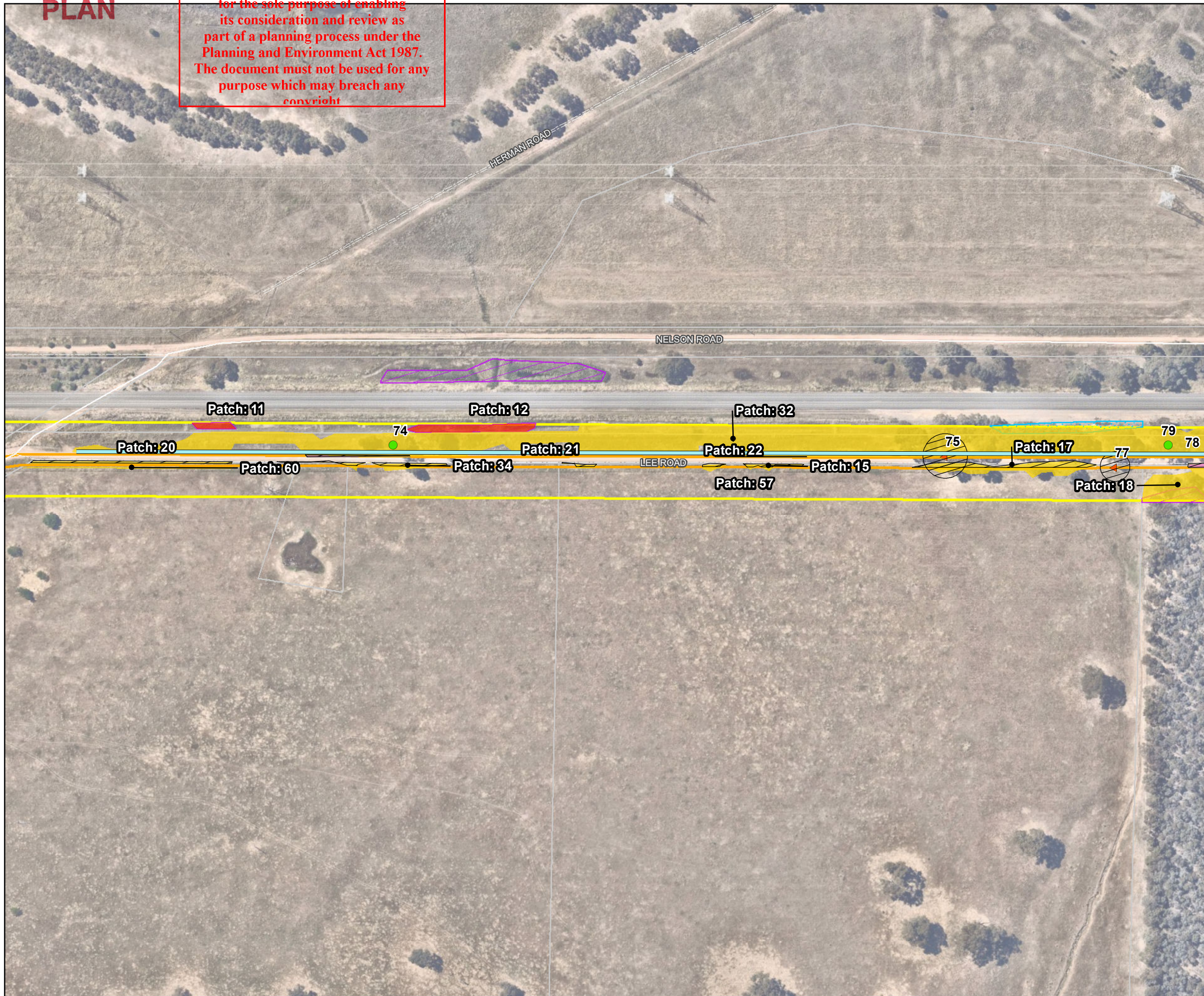
- Frog proof fence recommendation
  - Watercourse
  - Transmission Footprint
  - Project area
  - Study area
  - Original Project
  - Cadastre boundaries
  - EnSym - Native vegetation removal
  - Stagwatch locations
  - Woodland bird point surveys
  - EPBC Community impacts
- Trees**
- Removed
  - Retained
- Native Vegetation**
- Box Ironbark Forest
  - Plains Woodland / Herb-rich Gilgai Wetland
  - Plains Grassy Woodland
  - Plains Woodland
  - Spike-sedge Wetland
  - Tall Marsh
  - Vegetation to be retained
- Fauna Habitat**
- Aquatic - deep marsh
  - Aquatic - shallow marsh
- Revegetation**
- Exotic revegetation
  - Indigenous revegetation



Coordinate system: GDA 1994 MGA Zone 55  
 Scale ratio correct when printed at A3  
 1:2,500 Date: 13/01/2023  
 Data sources: - DELWP, Geoscience Australia

© WSP Australia Pty Ltd ("WSP") Copyright in the drawings, information and data recorded ("the information") is the property of WSP. This document and the information are solely for the use of the authorised recipient and this document may not be used, copied or reproduced in whole or part for any purpose other than that which it was supplied by WSP. WSP makes no representation, undertakes no duty and accepts no responsibility to any third party who may use or rely upon this document or the information. NCSI Certified Quality System to ISO 9001. © APPROVED FOR AND ON BEHALF OF WSP Australia Pty Ltd.

This copied document to be made available for the sole purpose of enabling its consideration and review as part of a planning process under the Planning and Environment Act 1987. The document must not be used for any purpose which may breach any copyright



**Figure 3**  
 Detailed Assessment –  
 Ecological Values and Proposed Impacts

- Frog proof fence recommendation
- Watercourse
- Transmission Footprint
- Project area
- Study area
- Original Project
- Cadastre boundaries
- EnSym - Native vegetation removal
- Stagwatch locations
- Woodland bird point surveys
- EPBC Community impacts
- Trees**
  - Removed
  - Retained
- Native Vegetation**
  - Box Ironbark Forest
  - Plains Woodland / Herb-rich Gilgai Wetland
  - Plains Grassy Woodland
  - Plains Woodland
  - Spike-sedge Wetland
  - Tall Marsh
  - Vegetation to be retained
- Fauna Habitat**
  - Aquatic - deep marsh
  - Aquatic - shallow marsh
- Revegetation**
  - Exotic revegetation
  - Indigenous revegetation



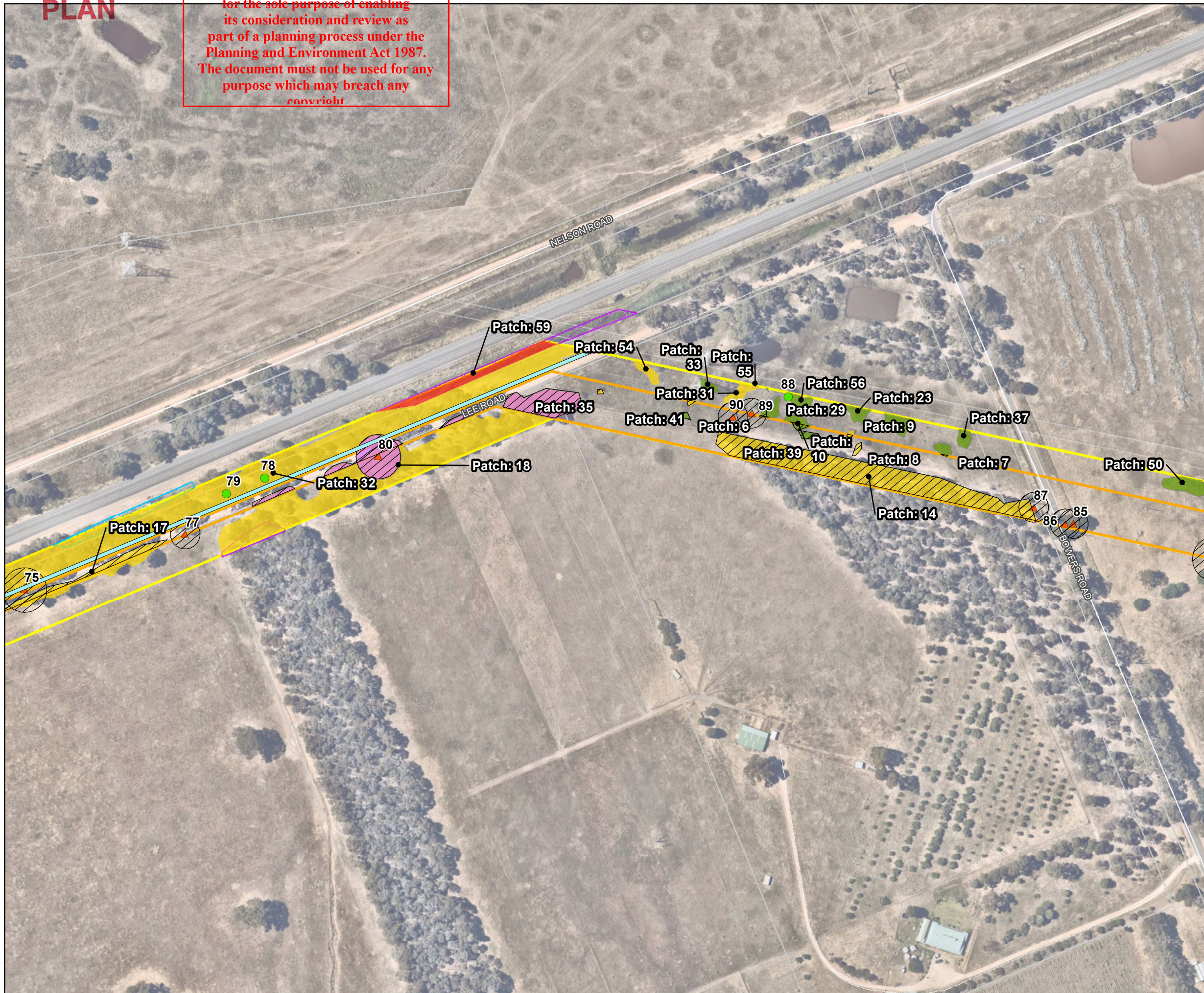
Coordinate system: GDA 1994 MGA Zone 55  
 Scale ratio correct when printed at A3  
 1:2,500 Date: 13/01/2023  
 Data sources: - DELWP, Geoscience Australia

© WSP Australia Pty Ltd ("WSP") Copyright in the drawings, information and data recorded ("the information") is the property of WSP. This document and the information are solely for the use of the authorised recipient and this document may not be used, copied or reproduced in whole or part for any purpose other than that which it was supplied by WSP. WSP makes no representation, undertakes no duty and accepts no responsibility to any third party who may use or rely upon this document or the information. NCSI Certified Quality System to ISO 9001. © APPROVED FOR AND ON BEHALF OF WSP Australia Pty Ltd.

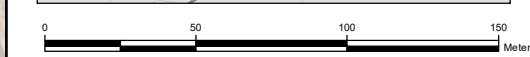
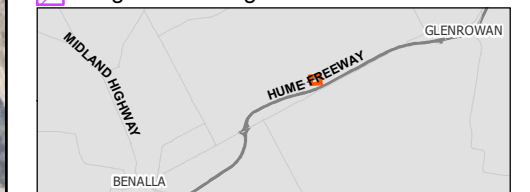


This copied document to be made available for the sole purpose of enabling its consideration and review as part of a planning process under the Planning and Environment Act 1987. The document must not be used for any purpose which may breach any copyright

**Figure 3**  
Detailed Assessment – Ecological Values and Proposed Impacts



- Frog proof fence recommendation
- Watercourse
- Transmission Footprint
- Project area
- Study area
- Original Project
- Cadastre boundaries
- EnSym - Native vegetation removal
- Stagwatch locations
- Woodland bird point surveys
- EPBC Community impacts
- Trees**
  - Removed
  - Retained
- Native Vegetation**
  - Box Ironbark Forest
  - Plains Woodland / Herb-rich Gilgai Wetland
  - Plains Grassy Woodland
  - Plains Woodland
  - Spike-sedge Wetland
  - Tall Marsh
  - Vegetation to be retained
- Fauna Habitat**
  - Aquatic - deep marsh
  - Aquatic - shallow marsh
- Revegetation**
  - Exotic revegetation
  - Indigenous revegetation



Coordinate system: GDA 1994 MGA Zone 55  
 Scale ratio correct when printed at A3  
 1:2,500 Date: 13/01/2023  
 Data sources: - DELWP, Geoscience Australia

© WSP Australia Pty Ltd ("WSP") Copyright in the drawings, information and data recorded ("the information") is the property of WSP. This document and the information are solely for the use of the authorised recipient and this document may not be used, copied or reproduced in whole or part for any purpose other than that which it was supplied by WSP. WSP makes no representation, undertakes no duty and accepts no responsibility to any third party who may use or rely upon this document or the information. NCSI Certified Quality System to ISO 9001. © APPROVED FOR AND ON BEHALF OF WSP Australia Pty Ltd.

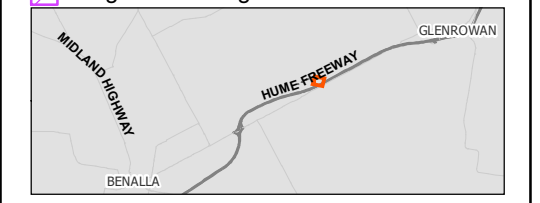
This copied document to be made available for the sole purpose of enabling its consideration and review as part of a planning process under the Planning and Environment Act 1987. The document must not be used for any purpose which may breach any copyright



**Lochard Energy Reserve 1 Facility: Winton**

**Figure 3**  
Detailed Assessment – Ecological Values and Proposed Impacts

- Frog proof fence recommendation
- Watercourse
- Transmission Footprint
- Project area
- Study area
- Original Project
- Cadastre boundaries
- EnSym - Native vegetation removal
- Stagwatch locations
- Woodland bird point surveys
- EPBC Community impacts
- Trees**
  - Removed
  - Retained
- Native Vegetation**
  - Box Ironbark Forest
  - Plains Woodland / Herb-rich Gilgai Wetland
  - Plains Grassy Woodland
  - Plains Woodland
  - Spike-sedge Wetland
  - Tall Marsh
  - Vegetation to be retained
- Fauna Habitat**
  - Aquatic - deep marsh
  - Aquatic - shallow marsh
- Revegetation**
  - Exotic revegetation
  - Indigenous revegetation

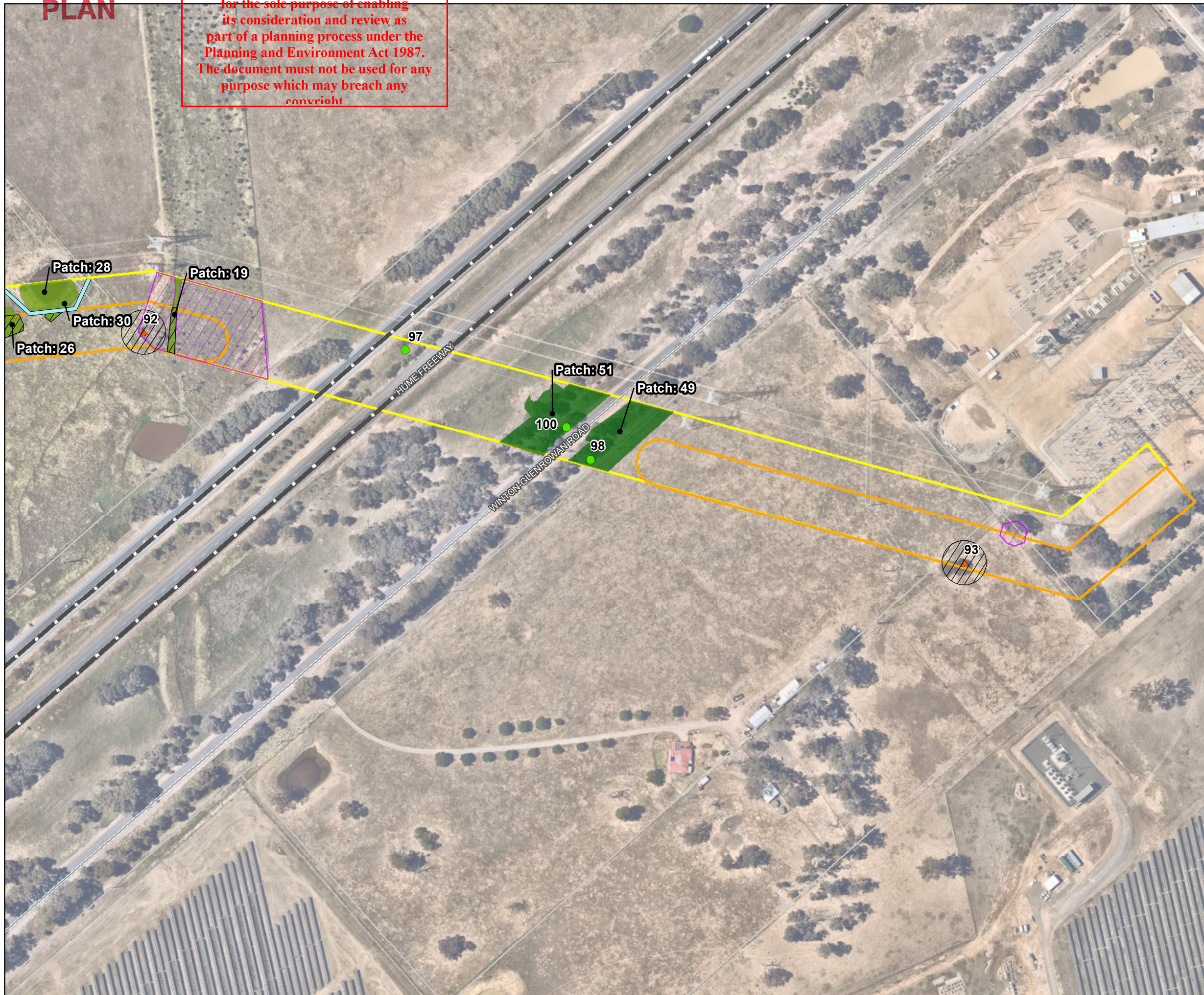


Coordinate system: GDA 1994 MGA Zone 55  
 Scale ratio correct when printed at A3  
 1:2,500 Date: 13/01/2023  
 Data sources: - DELWP, Geoscience Australia

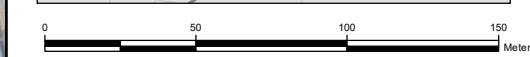
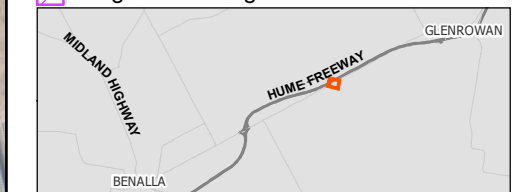
© WSP Australia Pty Ltd ("WSP") Copyright in the drawings, information and data recorded ("the information") is the property of WSP. This document and the information are solely for the use of the authorised recipient and this document may not be used, copied or reproduced in whole or part for any purpose other than that which it was supplied by WSP. WSP makes no representation, undertakes no duty and accepts no responsibility to any third party who may use or rely upon this document or the information. NCSI Certified Quality System to ISO 9001. © APPROVED FOR AND ON BEHALF OF WSP Australia Pty Ltd.

This copied document to be made available for the sole purpose of enabling its consideration and review as part of a planning process under the Planning and Environment Act 1987. The document must not be used for any purpose which may breach any copyright

**Figure 3**  
 Detailed Assessment –  
 Ecological Values and Proposed Impacts



- Frog proof fence recommendation
  - Watercourse
  - Transmission Footprint
  - Project area
  - Study area
  - Original Project
  - Cadastre boundaries
  - EnSym - Native vegetation removal
  - Stagwatch locations
  - Woodland bird point surveys
  - EPBC Community impacts
- Trees**
- Removed
  - Retained
- Native Vegetation**
- Box Ironbark Forest
  - Plains Woodland / Herb-rich Gilgai Wetland
  - Plains Grassy Woodland
  - Plains Woodland
  - Spike-sedge Wetland
  - Tall Marsh
  - Vegetation to be retained
- Fauna Habitat**
- Aquatic - deep marsh
  - Aquatic - shallow marsh
- Revegetation**
- Exotic revegetation
  - Indigenous revegetation



Coordinate system: GDA 1994 MGA Zone 55  
 Scale ratio correct when printed at A3  
 1:2,500 Date: 13/01/2023  
 Data sources: - DELWP, Geoscience Australia

© WSP Australia Pty Ltd ("WSP") Copyright in the drawings, information and data recorded ("the information") is the property of WSP. This document and the information are solely for the use of the authorised recipient and this document may not be used, copied or reproduced in whole or part for any purpose other than that which it was supplied by WSP. WSP makes no representation, undertakes no duty and accepts no responsibility to any third party who may use or rely upon this document or the information. NCSI Certified Quality System to ISO 9001. © APPROVED FOR AND ON BEHALF OF WSP Australia Pty Ltd.