



HEYTESBURY UNDERGROUND GAS STORAGE PROJECT (HUGS)

Pipeline Consultation Plan



February 2024

UGS-ZP-0177

Rev 0

This document is protected by copyright. No part of this document may be reproduced, adapted, transmitted, or stored in any form by any process (electronic or otherwise) without the specific written consent of The Company. All rights are reserved.

UNCONTROLLED WHEN PRINTED

Revision History					
Revision	Description	Date	Prepared by	Reviewed by	Approved by
0	Issued for Use	27/2/2024	S Bartlett	G Lucchi	D Smith

Review by Date:	N/A
Confidential:	No

Summary of changes

Revision	Sections changed	Comments

Acknowledgement of Country

Lochard Energy acknowledges the Eastern Maar people as the Traditional Owners of the land on which this Project is located. We pay our respects to their Elders past and present and acknowledge the Eastern Maar's ongoing deep connection and relationship with their Country in south-western Victoria.



Table of Contents

TABLE OF CONTENTS	4
ABBREVIATIONS & GLOSSARY	6
1. INTRODUCTION	8
1.1 About Lochard Energy	8
1.2 About Iona Gas Storage Facility	8
1.3 HUGS Project Overview	10
1.4 Underground Hydrogen Storage	11
1.5 The HUGS Pipeline	11
1.6 Proposed Pipeline Route	11
1.7 Proposed Project Timeline	13
2. PURPOSE OF THIS PLAN	15
3. CONSULTATION APPROACH	15
3.1 Consultation Principles	16
3.2 Audience Profile	17
3.3 Consultation Methods	17
3.4 Establishing Consultation with Landowners and Occupiers	19
3.5 Stakeholder Identification	19
4. INFORMATION AND NOTICES FOR LANDOWNERS AND OCCUPIERS	22
4.1 General	22
4.2 Fact sheets	22
4.3 Notices	22
4.3.1 Notice of Intention to Enter Land for Survey	22
4.3.2 Notice of Pipeline Corridor	23
4.3.3 Notice of Pipeline Licence Application	23
4.4 Agreements with Landowners and Occupiers	23
4.4.1 Commitments to landowners and occupiers to negotiate voluntary agreements	24
4.5 Compulsory Acquisition	24
4.6 Independent Advice	25
4.7 Schedule of Landowner Consultation, Agreements and Notices	25
5. MANAGEMENT OF IMPACTS	29
5.1 Property Management Plan (PMP)	30
5.2 Cultural Heritage Management Plan	30
5.3 Environmental Management Plan	30
5.4 HDD Management Plan	31
5.5 Construction Safety Management Plan	31
5.6 Operations Safety Management Plan	31
6. RECORDS MANAGEMENT PROCEDURE	31
6.1 Project Records Management	31

6.2	Statutory Reporting	32
6.3	Privacy Policy and use of Personal Information	32
6.4	Media Enquiries	33
<hr/>		
7.	EVALUATION OF CONSULTATION	33
7.1	Feedback Process	33
7.2	Timing for Response	34
<hr/>		
8.	FURTHER INFORMATION	34
8.1	Contact Information	34
8.2	Resources and Further Information	36
<hr/>		
	APPENDIX A - CHECKLIST OF REQUIREMENTS FOR A CONSULTATION PLAN	37
	APPENDIX B - HUGS PIPELINE AND PROJECT FACT SHEET	39
	APPENDIX C - FACT SHEET: PIPELINE CONSTRUCTION PROCESS	44
	APPENDIX D - FACT SHEET - REGULATORY APPROVALS	49
	APPENDIX E - TEMPLATE NOTICE OF INTENTION TO ENTER LAND FOR SURVEY	54
	APPENDIX F - TEMPLATE NOTICE OF PIPELINE CORRIDOR	62
	APPENDIX G - FREQUENTLY ASKED QUESTIONS	64
	APPENDIX H - MAP OF PROPOSED PIPELINE ALIGNMENT	66
	APPENDIX I - PCP MONTHLY REPORT TEMPLATE	67
	APPENDIX J - OVERVIEW OF THE IGSF NETWORK AND FIELDS	68

FIGURES

Figure 1 Overview of the IGSF network and gas storage fields (also shown in Appendix J)	9
Figure 2 HUGS Project location overview	10
Figure 3 Overview of proposed HUGS Pipeline route	13

TABLES

Table 1: Current and proposed project key dates	14
Table 2: Current and proposed key dates for Pipeline approvals and land tenure with landowners and occupiers	14
Table 3: Consultation Principles	16
Table 4: Communication methods	18
Table 5: HUGS Pipeline Key Stakeholders	20
Table 6: Regulatory timeframes for Landowner Consultation, Agreements and Notices	25
Table 7: Contact Information	34

ABBREVIATIONS & GLOSSARY

Abbreviation or Term	Description
APGA	Australian Pipelines and Gas Association
CEMP	Construction Environmental Management Plan
CHMP	Cultural Heritage Management Plan
CSMP	Construction Safety Management Plan
DN	Nominal Diameter
DEECA	Department of Energy, Environment and Climate Action
DJSIR	Department of Jobs, Skills, Industry and Regions
ERR	Earth Resources Regulation
ESV	Energy Safe Victoria
FAQ	Frequently Asked Questions
HDD	Horizontal Directional Drilling
HSE	Health, Safety and Environment
HUGS	Heytesbury Underground Gas Storage
IAP2	International Association for Public Participation
IGSF	Iona Gas Storage Facility
km	Kilometre
MFCT	Mylor, Fenton Creek and Tregony gas fields
NPPS	North Paaratte Production Station
PCP	Pipeline Consultation Plan
PMP	Property Management Plan
PPL	Petroleum Production Licence
ROW	Right of Way
SMS	Safety Management Study
UGS	Underground Gas Storage

Abbreviation or Term	Definition
AS 2885	Refers to the Australian Standard for Pipelines - gas and liquid petroleum. AS 2885 specifies requirements for design and construction of onshore pipeline systems
Gathering Line	A pipeline wholly within a production licence area, used to convey natural gas per s82 of the Petroleum Act (Vic) 1998
Landowner	The owner of the land, as per the registered title, that is affected by the proposed HUGS Pipeline.
Lochard Energy	Lochard Energy (Iona Operations) Pty Ltd ACN 608 441 729
Near-neighbours	Refers to all nearby residents adjacent to the project area.
Occupier	A lessee or licensee of land who is occupying the land but is not the landowner and is affected by the proposed HUGS Pipeline.
Petroleum Act	Refers to the Victorian Petroleum Act 1998
Petroleum Regulations	Refers to the Victorian Petroleum Regulations 2021

Pipelines Act	Refers to the Victorian Pipelines Act 2005.
Pipelines Regulations	Refers to the Victorian Pipelines Regulations 2017.
Proponent	Lochard Energy (Iona Operations) Pty Ltd ACN 608 441 729 the entity who is applying for a licence to construct and operate a pipeline.
Safety Management Study (SMS)	A study that applies the safety principles to the design, construction and operation of a licensed pipeline (as per AS2885).
Stakeholder	A person or organisation potentially affected by, or with an interest in the Project

1. INTRODUCTION

As Australia's energy market transitions away from coal-fired power generation to renewable energy, energy storage capacity of different technology types is needed to ensure a consistent and reliable supply.

Lochard Energy is the proponent of the Heytesbury Underground Gas Storage (HUGS) Project and the proposed new HUGS Pipeline, which will expand the capacity of the Iona Gas Storage Facility (IGSF). The HUGS Project is located in South West Victoria near the townships of Port Campbell and Timboon. The HUGS Project is designed to provide additional security of supply and reliability to the growing demands for energy storage in the eastern Australian energy market, which will help support the transition to a lower carbon future.

As the market transitions, we expect that the IGSF will play an increasingly important role, by providing underground storage services to gas-fired power generators, which will be critical in providing back-up supply during periods of low renewable energy generation. This combination of renewable energy, supported by gas-fired power generators and other technologies, will help facilitate a more rapid and smoother transition away from high emitting coal generation.

In the future, there is potential for the HUGS Project to become an underground renewable hydrogen storage project. As such, the HUGS Pipeline is being designed to safely convey both natural gas and hydrogen or a blend of both so that Lochard Energy can maintain the opportunity to explore the repurposing of its underground assets for the safe storage of hydrogen.

Lochard Energy are actively consulting with local community and landowners and occupiers on the HUGS Project and have established a Community Liaison Committee to engage with community members and other stakeholders.

1.1 About Lochard Energy

Lochard Energy are energy storage and infrastructure specialists who own and operate the Iona Gas Storage Facility (IGSF) near Port Campbell, Victoria and have headquarters in Southbank (Melbourne), Victoria. Lochard Energy plays a vital role in maintaining reliable gas (and energy) supply to Australia's east-coast gas market.

Lochard Energy is majority owned by Australian superannuation funds and our investment managers currently manage a combined portfolio of more than \$150bn. Lochard Energy is acting, in respect of the HUGS Project and HUGS Pipeline, in its capacity as trustee of the Lochard Energy (Iona Operations) Trust ABN 25 151 811 449.

Lochard Energy supports Australia's net zero emissions targets and are committed to supporting the transition towards a more sustainable energy future.

1.2 About Iona Gas Storage Facility

The Iona Gas Field was first discovered in 1988 and subsequently drilled for natural gas before being converted into a gas storage facility in 1998. The Iona Gas Storage Facility (IGSF) was officially commissioned and began operations in July 1999.

The IGSF is the largest independent provider of gas storage services to the east-coast gas market, is a gas processing and compression facility connected to a series of underground storage reservoirs (depleted gas fields). Iona comprises the following infrastructure as shown in Figure 1:

- The Iona Facility and associated wells;
- Wellsites at North Paaratte and Wallaby Creek and a Gathering Line hub at North Paaratte Production Station (NPPS);
- A Gathering Line network comprising:
 - DN300 NPPS – Iona Gathering Line;
 - DN300 Wallaby Creek to NPPS Gathering Line;
 - DN150 North Paaratte wellsite to NPPS Gathering Line.

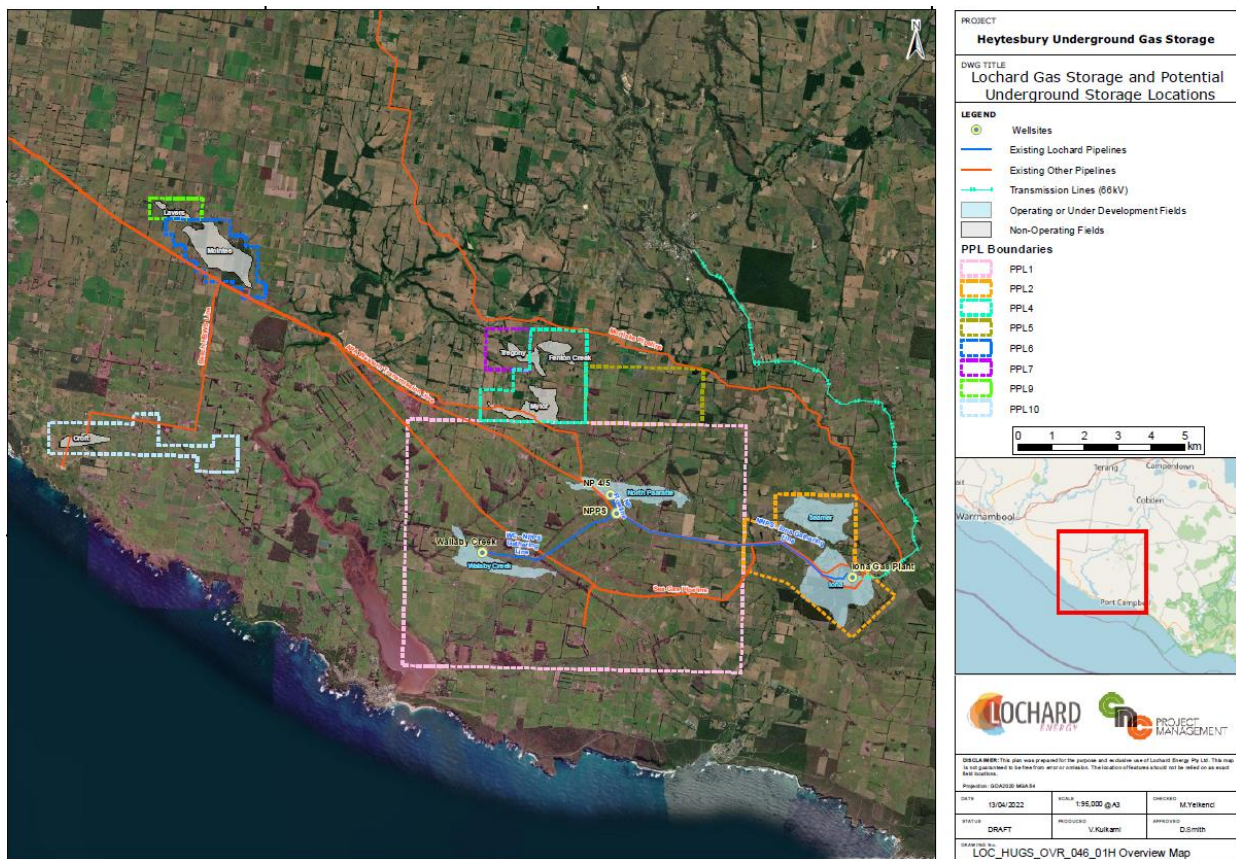


Figure 1 Overview of the IGSF network and gas storage fields (also shown in Appendix J)

1.3 HUGS Project Overview

The HUGS Project is the expansion of the IGSF underground storage capacity to help ensure there is adequate winter gas for generation, provide additional security of supply and reliability to the market, and support Victoria’s transition away from coal.

Underground storage capacity the IGSF will be increased through the development of the existing Heytesbury depleted gas fields. The Heytesbury depleted gas fields are all natural sandstone formations that have had pre-existing natural gas extracted and are therefore ideal as a natural geological reservoir for the storage of gas.

The HUGS Project will develop a new wellsite which will access three depleted gas fields being Mylor, Fenton Creek, and Tregony (referred to as the MFCT wellsite). The current plan is to develop the Mylor field with 1-2 new gas storage well(s).

The new development is expected to provide a further ~7.5% increase in the storage capacity of the IGSF from the Mylor field alone. By increasing this capacity, the HUGS Project will help keep the supply of gas secure, reliable and safe for Victoria.



Figure 2 HUGS Project location overview

1.4 Underground Hydrogen Storage

In addition to expanding the IGSF with the HUGS Project, Lochard Energy is currently developing Victorian projects that can offer low or zero carbon solutions and help Victoria reach its energy goals.

Lochard Energy is also exploring the feasibility of the longer-term repurposing of its underground assets that comprise the IGSF to capture and store energy from renewable sources to support Victoria's energy transition, a project called H2RESTORE.

It is intended that H2RESTORE will generate green hydrogen and store it in depleted underground reservoirs. The hydrogen is then withdrawn and converted into energy and is intended to supply the National Electricity Network with back-up supply when renewable energy generation is lower than usual.

Should underground storage of hydrogen be feasible, the HUGS Project has the potential to be converted to store hydrogen in 10-15 years' time. More information on the H2RESTORE Project can be found here:

<https://www.lochardenergy.com.au/our-projects/h2restore/>

1.5 The HUGS Pipeline

In order to connect the MFCT wellsite to the IGSF, a new pipeline is required. This proposed new pipeline (the HUGS Pipeline) will convey natural gas and potentially hydrogen or a blend of both in the future, to and from the proposed new wellsite and underground gas storage fields. The HUGS Pipeline will be an extension to Lochard Energy's existing gathering line network from NPPS.

Lochard Energy has completed route option assessments using multi-criteria assessment to determine the preferred pipeline route that has the least impact on landowners and occupiers, community, and the environment. The preferred HUGS Pipeline route will be a 5.3 km 300mm (DN300) nominal diameter underground pipeline that will run from NPPS to MFCT. The HUGS Pipeline will then connect into the existing NPPS –DN300 gathering line. Further information on the HUGS Pipeline route selection is shown in Section 1.6.

The HUGS Pipeline will be bi-directional, which allows gas to be injected into wells for storage, and then to the IGSF for reprocessing and export.

1.6 Proposed Pipeline Route

Lochard Energy has completed a multi-criteria assessment using desktop and some site investigations to determine the preferred pipeline route for the HUGS Pipeline. Site surveys and desktop assessments continue to be undertaken until the detailed design of the pipeline has been completed.

The multi-criteria assessment for the selection of the preferred pipeline route considered the following factors:

- Environmental and cultural heritage sensitivities;
- Land use, sensitive receptors and least impact to affected landowners and occupiers;

- Alignment with existing easement and gas infrastructure;
- Pipeline length;
- Accessibility for construction and future operations; and
- Operability.

The preferred route for the proposed HUGS Pipeline will run from the North Paaratte Production Station (NPPS) via the North Paaratte wellsite (NP4/5) to the new MFCT wellsite location. The proposed HUGS Pipeline route is shown in Figure 3.

The proposed pipeline route to MFCT from NPPS was considered favourable to the alternative of the extension from the existing Wallaby Creek wellsite primarily for operational reasons. A new pipeline will debottleneck flow from existing North Paaratte wells that are currently constrained by the existing DN150 gathering line that currently connects these wells to the existing gathering line network back to Iona.

Other options for the pipeline were considered as part of the route assessment process which considered constraints and assessment criteria including visual impacts, social receptor issues and potential construction phase noise and air quality impacts.

The proposed pipeline route has been selected following environmental surveys and cultural heritage studies. The proposed route minimises impact on native vegetation and Lochard Energy is undertaking a complex assessment to avoid impacts on any areas of cultural heritage.

The exact alignment for the preferred pipeline route is nearing completion and will be finalised after further consultation with landowners, occupiers, Traditional Owners and other stakeholders.

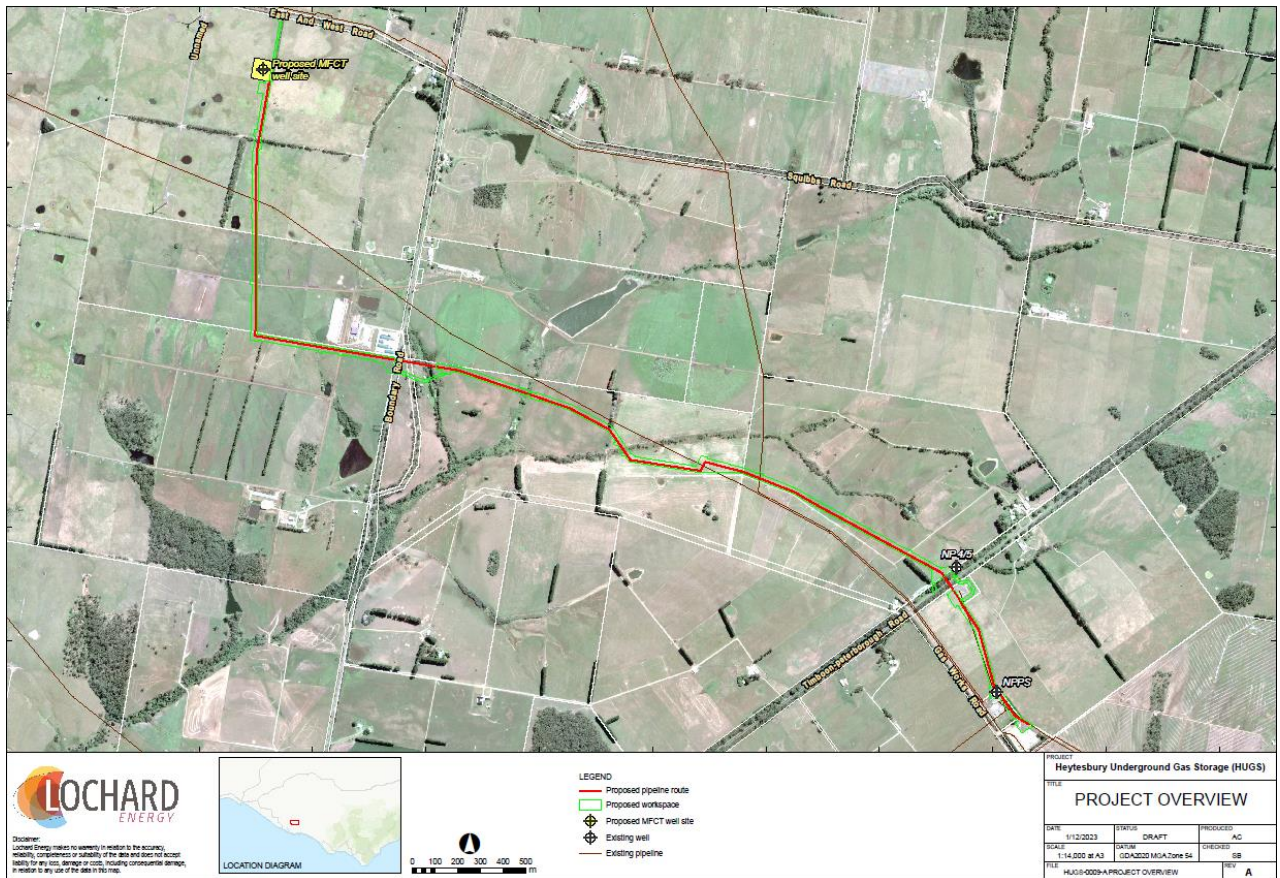


Figure 3 Overview of proposed HUGS Pipeline route

1.7 Proposed Project Timeline

Lochard Energy has carefully considered the project timeline and in consultation with landowners and occupiers and will attempt to schedule activities to have the least impact possible on their operations and the environment. The project will be developed in stages, with the first major stage being the drilling of the gas storage well(s) targeted for 2024, with pipeline construction to follow during the summer of 2024/2025. Summer construction is preferred to minimise impact to the land and environment and, where possible, avoid wet ground conditions.

The completed and proposed timing for the key activities of the HUGS Project is shown in Table 1. The timeline is subject to negotiation with landowners and occupiers, regulatory approvals and market requirements.

Table 1: Current and proposed project key dates

Year	Month	Activity
2021	April - December	Completed HUGS concept phase studies and introduce the project to landowners and occupiers
2022 - 2023	January - December	Surveys completed via agreement with landowners and occupiers
2024	Q1 -Q3	Ongoing surveys for Pipeline design and approval Pipeline Licence application process
	Q3 – Q4	Well pad construction for drilling
	Q4	Commence pipeline, wellsite and IGP works
2025	Q1 – Q2	Pipeline construction
	Q1 – Q2	Drilling of gas storage well(s)
	Q4	Complete construction of well site and IGP upgrades
2026	Q1	Commissioning of Pipeline
	Q1-Q2	Gas storage facility and pipeline operational

Table 2: Current and proposed key dates for Pipeline approvals and land tenure with landowners and occupiers

Year	Month	Activity	Purpose/comments
2024	February	Approved Pipeline Consultation Plan (PCP)	
	March	Give Notice of Intent to Enter Land for Survey (s19) Give Notice of Notice of Pipeline Corridor (S27)	
	March - April	Submission of Pipeline Licence Application	
	April - May	Give Notice of Application (S32)	
	March – May	Pipeline licence review and decision on application	Duration affected by whether a panel is

Year	Month	Activity	Purpose/comments
			appointed by the Minister for Energy and Resources
	September - October	Obtain all regulatory approvals to allow construction	Land tenure for pipeline corridor secured Acceptance of Environment Management Plan and Safety Management Plan
	November	Commence pipeline works	Contingent on fair-weather window.
2025	April	Complete pipeline works	
2026	Feb/March	Pipeline Consent to Operate granted	

2. PURPOSE OF THIS PLAN

This Pipeline Consultation Plan (PCP) has been developed to provide a comprehensive overview of how Lochard Energy will consult with impacted landowners, occupiers, stakeholders and the broader public regarding the proposed HUGS Pipeline. Consultation related to the development of the HUGS Project wellsite is outside the scope of this plan.

This PCP has been developed in the context of relevant Victorian legislation and aims to meet the minimum regulatory requirements for consultation as set out in the *Pipelines Act (Vic) 2005* (Pipelines Act) and the *Pipelines Regulations 2017*.

This PCP also reflects industry best practice and has been prepared in line with the research and resources provided by the International Association of Public Participation and the Australian Pipelines and Gas Association’s Guidelines for Stakeholder Engagement 2015.

3. CONSULTATION APPROACH

Lochard Energy acknowledges the role of effective consultation and its critical relationship with its’ social license to operate in the community.

Lochard Energy has developed consultation principles for the proposed HUGS Pipeline that align with its corporate commitment to operational excellence, customer outcomes and an outstanding safety culture.

Lochard Energy is a credible business partner and dependable member of the community. Lochard Energy’s professional conduct and that of its project contractors is guided by principles of integrity and performance which are underpinned by its six key values:

1. Safety first;
2. Operationally outstanding;
3. Customer focused;
4. United team;
5. Trust;
6. Leadership.

3.1 Consultation Principles

Lochard Energy has developed a set of consultation principles for the proposed HUGS Pipeline. These principles are outlined in Table 3 and detail Lochard Energy’s practical approach to effective communication and stakeholder engagement.

Table 3: Consultation Principles

Principle	Approach
Be proactive	<p>Proactive identification of issues of interest and/or concern to stakeholders and the community will lead to early resolution of any issues. Early identification of issues and concerns held by stakeholders, landowners and/or occupiers and the broader public will assist Lochard Energy in developing appropriate communications and information, and will minimise the risk of misinformation and the potential for adverse outcomes. Lochard Energy has an experienced team that has undertaken extensive upgrade work including new pipelines and will apply learnings from these projects in the development of the HUGS Pipeline.</p>
Act with integrity	<p>Honouring commitments made to stakeholder groups and community is essential in building and maintaining trust and protecting Lochard Energy’s reputation in the region. In the unlikely event that Lochard Energy is unable to honour a particular commitment, it will provide a timely and valid explanation to relevant the landowners, occupiers, stakeholders and/or the broader community.</p>
Maintain transparency	<p>Adopt a ‘no surprises’ approach with relevant stakeholders. This involves early and fulsome engagement with regulatory stakeholders to understand their expectations and to keep them abreast of the progress and development of this Project. Lochard Energy will also maintain regular communication with stakeholders to keep them informed and to provide channels for feedback.</p>
Quality systems and reporting	<p>Establish systems and processes that will meet the high standards expected by the relevant regulators. Systems and processes must demonstrate that adequate consultation has been undertaken by Lochard Energy, this involves keeping comprehensive records of all stakeholder interactions.</p>

Principle	Approach
Timeliness and responsiveness	<p>Responses to enquiries and submissions are made within a reasonable timeframe to meet expectations by landowners, occupiers, stakeholders and the broader public and to fulfil Lochard Energy’s consultation principles as a customer-focused and open proponent. This will also provide Lochard Energy with the best opportunity of managing and containing potential issues that may risk the progression of the HUGS Pipeline and Lochard Energy’s reputation.</p> <p>Further detail on the response process and timing guidelines for the HUGS Pipeline is provided in Section 8.2.</p>

3.2 Audience Profile

The proposed HUGS Pipeline route involves 10 parcels of land, with up to 6 impacted landowners in total (noting some landowners own more than one parcel of land in the proposed route).

Following the survey work and route options refinement, Lochard Energy has determined that the route shown in Figure 3 is the best option, with the least impacts.

Lochard Energy has existing relationships with some landowners within this proposed route and it known that each landowner has English as the primary language spoken.

Broadly, the 2021 Census data for Port Campbell, the township closest to the project area, illustrates that:

- 86.1% of people only spoke English at home. Other languages spoken at home include Indonesian 2.6%, Spanish 1.3% and Japanese 1.3%.
- The most common ancestries in Port Campbell were Australian 45.5%, English 29.9%, Scottish 19%, Irish 5.6% and Italian 4.8%.
- Aboriginal and/or Torres Strait Island people represent <1% of the population.

3.3 Consultation Methods

Lochard Energy will conduct consultation activities with impacted landowners, occupiers, stakeholders and the broader public in a clear and concise manner, using plain English and, where possible, will minimise the use of technical language.

Table 4 outlines an illustrative list of the methods and tools with which Lochard Energy proposes to use when consulting with landowners, occupiers, stakeholders and the broader public. This list is not a detailed list and further communication methods may be added as the project’s planning progresses.

Table 4: Communication methods

Communication Method	Description	Stakeholders
Face-to-face meetings	<p>Face-to-face meetings will be conducted by project personnel, including a dedicated Land Liaison Officer, to inform landowners and occupiers about project developments, obtain feedback and engage with stakeholders.</p> <p>Lochard Energy will comply with all public health orders or personal preference should face-to-face meetings be restricted. If so, a suitable alternative arrangement will be made (including email, Zoom or phone call).</p>	<p>Landowners and occupiers</p> <p>Stakeholders and public (if requested)</p>
Phone and email	<p>The direct phone and email details of the Landowner Liaison Officer will be provided to all landowners and occupiers.</p> <p>A HUGS Project phone number will also be available. These details will be provided publicly via the Lochard Energy website.</p> <p>Phone: 1800 848 879</p> <p>Email: info@lochardenergy.com.au</p>	<p>Landowners and occupiers</p> <p>Stakeholders and public (if requested)</p>
Fact sheets	<p>Fact sheets will be prepared for the HUGS Pipeline. These include:</p> <ul style="list-style-type: none"> • HUGS Pipeline project Fact Sheet (Appendix B); • Pipeline construction process (Appendix C); • Regulatory approvals overview (Appendix D); and • Frequently Asked Questions (FAQ's) (Appendix G). <p>These fact sheets will be provided in printed format to impacted landowners and occupiers and sent to any other party should they be requested.</p> <p>Visual maps and diagrams will be included on fact sheets to assist in communicating the impacts of the proposed HUGS Pipeline.</p>	<p>Landowners and occupiers (provided)</p> <p>Stakeholders, public and media (available on website and printed and posted/delivered if requested)</p>
PCP	<p>A copy (printed or digital) of the approved Pipeline Consultation Plan will be provided during consultation with landowners and</p>	<p>All stakeholders</p>

Communication Method	Description	Stakeholders
	occupiers and provided to any landowner, occupier, stakeholder or member of the public.	
Letters and notices	Formal project communications including letters and notices will be emailed or posted via registered post to relevant parties based on individual consultation preference.	Landowners and occupiers
Website	Fact sheets and other project information will be provided on the Lochard Energy website including this Consultation Plan. https://lochardenergy.com.au/our-projects/	All stakeholders

3.4 Establishing Consultation with Landowners and Occupiers

Lochard Energy has been and will continue to conduct face-to-face consultation for the proposed HUGS Pipeline, either in person or via remote online communication methods. Consultation will be conducted in line with landowners and occupiers preferences and any public health orders that may be present at that time.

Lochard Energy recognises that face-to-face consultation with landowners and occupiers is an effective consultation method for this stakeholder group, facilitating a clear line of communication and encouraging active engagement on the project.

Lochard Energy will maintain a single point of contact for each landowner and occupier throughout the consultation process.

Initial consultation and introduction of the HUGS Pipeline will be undertaken by the Lochard Energy Regulatory Approvals Manager or Project Manager with the Landowner Liaison Officer. Following this initial consultation, the Landowner Liaison Officer will be the primary representative and contact for landowners and occupiers for the duration of the pipeline’s construction and rehabilitation period.

All project consultation with impacted landowners and occupiers will be recorded in the project Stakeholder Engagement Register and/or consultation software.

More information on this process can be found in Section 6 of this document.

3.5 Stakeholder Identification

Lochard Energy has been an active member of the Port Campbell community through its operatorship of the IGSF and holds existing relationships with many stakeholders identified as being relevant to the proposed HUGS Pipeline.

Table 5 provides a list of key stakeholder groups identified as being relevant to the proposed HUGS Pipeline. This list is not a detailed list and further groups and individuals will be included as the project’s planning progresses.

Table 5: HUGS Pipeline Key Stakeholders

Stakeholder Group	Stakeholder	Detail
Government and authorities	Regulatory bodies	Victorian Department of Jobs, Skills, Industry and Regions (DJSIR) Victorian Department of Energy, Environment and Climate Action (DEECA) Department of Transport and Planning (DTP) Energy Safe Victoria (ESV) Environment Protection Authority (Victoria)
	Local government	Corangamite Shire Council
	Victorian State Government	Minister for Energy and Resources Minister for Climate Action Minister for Environment Minister for Local Government Minister for Roads and Road Safety Minister for Planning
	Agencies and authorities	Corangamite Catchment Management Authority Wannon Water Southern Rural Water VicRoads WorkSafe
	Elected representatives	Federal Member for Wannon State Member for Polwarth Western Victoria Region Members (Polwarth district)
	Cultural Heritage and Native Title	Eastern Maar Aboriginal Corporation
Landholders	Landowners and Occupiers	Landowners and occupiers directly impacted by pipeline construction and operation.

Stakeholder Group	Stakeholder	Detail
	Near-Neighbours	Neighbouring landowners indirectly impacted by pipeline construction or with an interest in construction impacts.
Other operators and utilities	Utilities and services	Telstra NBN Powercor Beach Energy APA Group EPIC Energy
Emergency services	Emergency services	Ambulance Victoria Victoria Police Country Fire Authority
Community and local groups	Lochard Energy CLC	Community Liaison Committee (formal community group convened by Lochard Energy)
	Community groups	Nullawarre Inc Port Campbell Community Group Port Campbell Progress Group Timboon Action Group
Conservation groups		Environment Victoria Heytesbury and Districts Landcare Network Sustainable Agriculture and Communities Alliance
Businesses and farmers		Local farmers Tourism operators Victorian Farmers Federation Local business (Timboon)
Community and General Public		People living within the area who may be impacted by increased noise, dust or traffic Local community with an interest in the project Tourists and visitors to the area
Media	Broadcast	TV and radio
	Print	Local newspapers
	Digital	News websites and social media

4. INFORMATION AND NOTICES FOR LANDOWNERS AND OCCUPIERS

4.1 General

Lochard Energy is committed to developing and maintaining positive relationships with impacted landowners, occupiers, stakeholders and the broader public.

The effectiveness of Lochard Energy's consultation process is dependent on effective collation and dissemination of information. In particular this will be made available to impacted landowners and occupiers using a range of communication methods aimed at keeping those landowners and occupiers fully informed.

Information will cover various aspects of the Project, including the following:

- The rationale for the HUGS Pipeline and the broader HUGS Project so to provide context to the need for the Pipeline;
- The regulatory approvals process for the HUGS Pipeline;
- The pipeline construction process and how any potential adverse impacts will be managed;
- Advice on opportunities for feedback and discussion with Lochard Energy and contact information for the regulating bodies.

4.2 Fact sheets

Lochard Energy is committed to providing timely and transparent information materials to landowners and occupiers affected by the proposed HUGS Pipeline. Fact sheets provided to landowners and occupiers will include a:

- HUGS Pipeline fact sheet (Appendix B);
- Pipeline construction process fact sheet (Appendix C);
- Regulatory approvals fact sheet (Appendix D);
- HUGS Project Frequently Asked Questions (Appendix G).

These fact sheets are required by the Pipelines Act and will form part of the consultation intended to engage with landowners, occupiers, stakeholders and the broader public.

4.3 Notices

Lochard Energy will provide notices to landowners and occupiers for the survey phase of the project and will continue to provide these to those affected by the proposed pipeline as contemplated by the Pipelines Act and Pipelines Regulations.

4.3.1 Notice of Intention to Enter Land for Survey

Surveys will be conducted along the proposed pipeline route to inform the construction methodology, design and development. It is a requirement that a 'Notice of Intention to Enter Land for Survey' (pursuant to Section 19 of the Pipelines Act and Section 6 of the Pipelines Regulations) be given to each landowner and occupier of the affected land

(including public land), advising of the proponent's intention to enter the land for the purpose of any survey.

The notice will be addressed to each landowner and occupier and the template of this notice is in the Appendix E of this document.

4.3.2 Notice of Pipeline Corridor

A 'Notice of Pipeline Corridor' will be given to each landowner and occupier in the proposed pipeline corridor, prior to a proponent's application for a licence, in order to inform affected parties of the proposed pipeline and ensure relevant consultation information including detailed fact sheets is provided (pursuant to Section 27 of the Pipelines Act and Section 7 of the Pipelines Regulations).

The notice will be addressed to each landowner and occupier and the template notice prescribed by the Act is provided in the Appendix F of this document.

4.3.3 Notice of Pipeline Licence Application

The pipeline proponent must apply for and obtain a licence, as issued under the Pipelines Act, in order to proceed with the construction and operation of a pipeline. The licencing process mandates that Lochard Energy, in the event of proceeding with an application to the Minister for Energy and Resources, will give notice to all affected landowners and occupiers, other stakeholders, responsible Ministers and authorities of the licence application ('Notice of Application' pursuant to Section 32 of the Pipelines Act).

The Notice of Pipeline Licence Application will invite submissions to the Minister for Energy and Resources by stakeholders regarding the Pipeline Licence Application. Lochard Energy will also publish a copy of the notice in a newspaper circulating generally in Victoria in accordance with the requirements of the Pipelines Act.

4.4 Agreements with Landowners and Occupiers

Lochard Energy will require access to private and Crown land in order to construct and operate the proposed pipeline.

Lochard Energy will make all reasonable attempts to reach mutual agreement with each owner and each occupier of land in relation to the entry onto the land for the purpose of a survey for the proposed pipeline. For survey works situated on Crown Land, Lochard Energy will seek consent from the respective Crown Land Minister to the entry onto Crown Land or the Public Authority in which Crown Land is vested.

Lochard Energy will negotiate agreements with landowners and occupiers for construction and operation. These agreements will have two main elements:

1. Options for temporary workspace areas and/or other licencing arrangements in order to construct the new pipeline;
2. Options for easement and/ or purchase of an easement with the owner of any private land to purchase an easement over that land for the purposes of the pipeline. These easements will provide right of access to operate and maintain

the pipeline post construction and are typically smaller than the temporary workspace areas.

For the purpose of Crown Land tenure, Lochard Energy will aim to sign into a licence agreement for all Crown Landowners and authorities, if required.

Lochard Energy is committed to clear and transparent communications in discussions with landowners and occupiers to ensure they are fully informed of the requirements and potential impacts of the construction and operation of the pipeline.

4.4.1 Commitments to landowners and occupiers to negotiate voluntary agreements

Lochard Energy will commit to the following with each landowner and occupier:

- Keep a record of all Project related engagement in a project database
- Inform landowners and occupiers about Lochard Energy's complaints policy and ensure any complaints are resolved in line with this policy
- Collect and store landowners and occupiers information in line with the Privacy Act 1988
- Provide respective statutory notices in line with the Pipelines Act 2005
- Provide general project information (including link to the most recent Pipeline Consultation Plan, complaints policy, project rationale and proposed timelines) and in a plain English format
- When providing landowners and occupiers agreements requesting their signature, inform them about their rights to seek professional advice and the processes to be reimbursed when obtaining such advice
- Consult landowners and occupiers on the development of a Property Management Plan for their property

4.5 Compulsory Acquisition

The Pipelines Act includes provisions which allow a proponent to apply to the Minister for Energy and Resources, to compulsorily acquire an easement required to construct and operate a pipeline, should negotiations with landowners and occupiers be unsuccessful. For clarity, Lochard Energy will make all reasonable attempts to negotiate a mutual agreement for the required tenure. before consideration compulsory acquisition. Further information of what will be undertaken with each landowner and occupier can be found in section 4.4. Landowners and occupiers and any respective solicitors will be kept informed in the event that any compulsory acquisition application is being considered or applied for. The proponent may seek to proceed with a compulsory acquisition process six (6) months from the initial provision of the Notice of Pipeline Corridor.

Lochard Energy is committed to providing reasonable compensation to impacted landowners and occupiers as part of the negotiation of access to easements and temporary workspace areas, which will be informed by independent land valuations. Compensation will be negotiated in accordance with the Pipelines Act, and generally align with the principles found under the Land Acquisition and Compensation Act 1986.

Further information on compulsory acquisition under the Pipelines Act can be found in Appendix D.

4.6 Independent Advice

Landowners and occupiers impacted by the proposed HUGS Pipeline are encouraged to seek independent advice in relation to dealings with Lochard Energy, should any concerns be held regarding the legal implications of the pipeline and its potential impact on their land.

Pre-defined and agreed reasonable costs associated with obtaining independent advice provided by legal and professional services firms in relation to the proposed HUGS Pipeline will be met by Lochard Energy.

4.7 Schedule of Landowner Consultation, Agreements and Notices

Lochard Energy will consult with impacted landowners and occupiers at the earliest opportunity and provide notices in line with the requirements specified by the Pipelines Act.

The sequence and duration of consultation and giving of notices is outlined in Table 6.

Table 6: Regulatory timeframes for Landowner Consultation, Agreements and Notices

#	Event	Timing	Method
Notice of Intent to Enter Land			
1.	Minister for Energy, and Resources advises Lochard Energy of decision in relation to the Consultation Plan submitted for approval.	Determination to be made 21 days from the submission date.	Email and/or letter
2.	<p>If approval is granted in accordance with Section 18(2) of the Pipelines Act:</p> <ul style="list-style-type: none"> • Notice of Intention to Enter Land for Survey will be given to landowners and occupiers (and the relevant Crown Minister if applicable). • Initial discussion will be held with landowners and 	Notice of Intention to Enter Land for Survey may be given.	Notices will be emailed (subject to agreement with landowner or occupier) or posted via registered post

#	Event	Timing	Method
	occupiers regarding land access required for survey.		
3.	Lochard Energy establishes agreements with landowners and occupiers to enter land and conduct pipeline survey activities (and seek consent from the relevant Crown Land Minister if applicable)	Lochard Energy seeks agreements for access after Notice of Intention to Enter Land for Survey has been given.	Notices will be emailed (subject to agreement with landowner or occupier) or posted via registered post
If an access agreement with a landowner or occupier has NOT been obtained (assuming proponent has taken all reasonable steps)			
3a	If an agreement has NOT been reached with landowners or occupiers, after all reasonable steps have been taken (as per Section 20 of the Pipelines Act), the proponent may apply to the Minister for Energy and Resources for consent to enter the land.	Application to the Minister for Energy and Resources may occur. Application can be made if agreement is not reached within 14 days of the notice of intention to enter the land being given.	Notice of intention to apply for this will be communicated to landowners and occupiers prior to submitting
3b	Lochard Energy advises the landowner and occupier if an application has been made to the Minister for Energy and Resources for land access. Note that a copy of the application made under step 3a must be provided to the landowners/occupiers.	Advice to be provided to landowner and occupier upon application to the Minister for Energy and Resources.	Notices will be emailed or posted via registered post (subject to agreement with landowner or occupier).
3c	Landowners and occupiers may advise the Minister for Energy and Resources of their reasons for refusing land access to the proponent	Advice to be provided to the Minister for Energy and Resources within 7 days of receiving a copy of the notification of the application from the proponent.	Email and/or letter.

#	Event	Timing	Method
	3d Minister for Energy and Resources provides a decision regarding the application for consent to enter land.	Minister for Energy and Resources provides a decision within 28 days of receiving the application.	Email and/or letter.
Notice of Pipeline Corridor			
4.	Lochard Energy provides a Notice of Pipeline Corridor to landowners and occupiers.	Notice of Corridor to be given.	Notices will be emailed or posted via registered post (subject to agreement with landowner or occupier).
5.	Lochard Energy enters into agreements with landowners to purchase easements over pipeline corridor (or easement/licence/lease for Crown or Public Authority land as per Part 6 of the Pipelines Act)	Proponent seeks agreements after the Notice of Corridor has been given.	Notices will be emailed or posted via registered post (subject to agreement with landowner or occupier).
If an Option agreement to purchase an easement is NOT reached			
5a	Lochard Energy may apply to the Minister for Energy and Resources for consent to compulsorily acquire an easement (and give notice to the landowner and occupier of the application).	At least 6 months after giving of the Notice of Pipeline Corridor	Email and/or letter.
5b	If an application is made, Lochard Energy must notify the Registrar of Titles of the application (along with prescribed information as per section 91 of the Pipelines Act).	Without delay after application to the Minister for Energy and Resources to compulsorily acquire the easement.	Email and/or letter.
5c	The landowner and/or occupier has the option to make a submission to Minister for Energy and	The submission is to be made on or before the 'submission date' as determined by the Minister.	Email and/or letter

#	Event	Timing	Method	
	Resources regarding the proponent's application.			
	5d	The Minister for Energy and Resources provides a decision regarding compulsory acquisition of the easement.	Decision to be made within 28 days of either (whichever is later): 1. Submission date of the application; or 2. Determination of the associated application to construct and operate the pipeline (refer step 9 below).	Email and/or letter
	5e	If a public authority has refused to grant a lease, easement, licence or authority to a licensee under section 87 in respect of land vested in the public authority, the licensee may apply to the Minister for the grant of an authority over that land under this section.	There is no specific time associated with this activity.	Email and/or letter
6.	Lochard Energy may apply to the Minister for Energy and Resources for a Licence to construct and operate a pipeline.	Readiness of Lochard Energy in relation to the requirements of the application (as prescribed by the Act).	Email and/or letter.	
7.	Following application for a Licence, Lochard Energy must provide a Notice of Application to: 1. All landowners and occupiers of land directly affected by the proposed pipeline; 2. The Planning Minister; 3. The Water Minister 4. Any relevant Crown Land Minister for Crown Land affected by the pipeline; 5. Each responsible authority for an area affected by the pipeline;	The Minister for Energy and Resources determines the applicable 'submission date' for the proponent to include in the notice – the provision of the Notice follows this determination. The Minister for Energy and Resources determines the 'submission date' once satisfied that the application is complete. Decision to be granted within 28 days, unless it is referred to a panel in which case the decision is as specified by	Notices will be emailed or posted via registered post (subject to agreement with landowner or occupier).	

#	Event	Timing	Method
	6. Any Department Head of Government department, public authority, person or body specified by the Minister for Energy and Resources. Additionally, Lochard Energy must cause a copy of the notice to be published in a newspaper circulating generally in Victoria.	the Minister in accordance with the Pipelines Act.	
8.	Any affected person may make a submission to the Minister for Energy and Resources regarding the licence application.	The submission is to be made on or before the submission date as determined by the Minister for Energy and Resources.	Email and/or letter
9.	The Minister for Energy and Resources provides a determination regarding the licence application.	The Minister for Energy and Resources provides a determination within 28 days of the submission date unless the application is referred to a panel. This timing is subject to the Minister for Energy and Resources' direction as per the conditions of Part 5 of the Act.	Email and/or letter

5. MANAGEMENT OF IMPACTS

Consultation with impacted landowners, occupiers, stakeholders and the broader public will assist with Lochard Energy's understanding of current and future intentions for land use and existing and planned installation of infrastructure. This consultation will be considered as part of pipeline design, construction and operational activities.

Potential adverse impacts, for example on land, health, safety and the environment listed in the Pipelines Act will be identified systematically in the consultation process and through desktop studies and on-the-ground assessments to reduce risk to as far as is reasonably practicable. This will also include identification of matters as required to facilitate decision making in accordance with the *Climate Change Act 2017* (Vic) and *Flora and Fauna Guarantee Act 1988* (Vic).

Lochard Energy seeks to ensure any impact posed by the proposed HUGS Pipeline's construction and operation is minimised as far as is reasonably practicable, complies with legislation and is managed in accordance with corporate and project HSE policies. Compliance with the legislation and other corporate and project HSE policies will also

extend to any work conducted by the construction contractor and subcontractors working on behalf of Lochard Energy.

Management plans will be individually prepared for the discrete project phases. This allows each plan to focus on the activities and hazards associated with the particular stage or operation. Lochard Energy is required to submit management plans to regulatory agencies for consideration and may only proceed with associated activities pending their acceptance.

Impact management plans that will be prepared for the proposed HUGS Pipeline are covered in sections 5.1– 5.6.

5.1 Property Management Plan (PMP)

A Property Management Plan (PMP) may be produced for individual parcels of land with impacted landowners and occupiers. This plan will be developed in consultation with landowner and occupiers to note the pre-existing condition of areas that are expected to be impacted by the project, identify impacts and how to mitigate and manage these, such as access, amenity, commercial considerations, rehabilitation requirements and environmentally sensitive areas. These PMPs or an itemised line list of requirements from the PMPs will be provided to the successful contractor as instruction on how to manager and reinstate private properties prior to, during and after the construction stage.

5.2 Cultural Heritage Management Plan

A Cultural Heritage Management Plan (CHMP) will be prepared in accordance with the *Aboriginal Heritage Act (Vic) 2006* and in consultation with the Eastern Maar Aboriginal Corporation as the Registered Aboriginal Party and Native Title Traditional Owners for the area.

The CHMP will be developed using data generated from desktop studies, a standard assessment and a complex assessment. The CHMP will detail the proposed construction methodologies to avoid or minimise impacts from construction and ongoing operation on sensitive cultural heritage areas. The CHMP is subject to regulatory review/approval.

5.3 Environmental Management Plan

An Environmental Management Plan (EMP) in accordance with Section 133 of the Pipelines Act will be developed incorporating data from field surveys and further assessments. The document will:

- Identify identifies the risks to the environment arising from the pipeline operation;
- specify what Lochard Energy will do to eliminate or minimise those risks, including rehabilitation of land.

Construction of the pipeline is contingent on acceptance of this plan by the Minister for Energy and Resources. This plan will remain in place until the completion of

rehabilitation works, after which a revision will be undertaken to suit the changed risk profile during the operational phase.

5.4 HDD Management Plan

Horizontal Directional Drilling (HDD) is generally undertaken where there are large road crossings, major waterway crossings and other environmentally or commercially sensitive crossings.

Dependent on the number and distance of areas of the pipeline that will be constructed by HDD, a HDD Management Plan, as part of the Environmental Management Plan, may be developed to define the management system, processes, personnel and equipment required to safely and reliably deliver an HDD. The need for this plan will depend on the final pipeline design and route.

5.5 Construction Safety Management Plan

A Construction Safety Management Plan (CSMP) will be developed in accordance with Section 126 of the Pipelines Act to meet the requirements of Lochard Energy's policies, Australian Standards (AS/NZS 2885), and the Pipelines Regulations.

The document will identify the risks to the safety of the public from the pipeline construction and will specify what Lochard Energy will do to eliminate or minimise those risks.

The document will detail the systems and processes to be implemented during construction including hazard alert protocols, incident reporting, safety meetings and hazard analysis processes. Construction of the pipeline is contingent on acceptance of the CSMP by Energy Safe Victoria (ESV).

5.6 Operations Safety Management Plan

An Operations Safety Management Plan (OSMP) will be developed in accordance with Section 126 of the Pipelines Act to provide an integrated safety management approach in line with Lochard Energy's existing safety management policies and procedures for pipeline operations. This plan will also need to meet requirements of Australian Standards (AS/NZS 2885), the Pipelines Act and Pipelines Regulations. As a minimum, this document will identify the risks to the safety of the public from the pipeline operation and specify what Lochard Energy will do to eliminate or minimise those risks.

Operation of the pipeline is contingent on acceptance of this OSMP by Energy Safe Victoria.

6. RECORDS MANAGEMENT PROCEDURE

6.1 Project Records Management

Lochard Energy is using a consultation software database to record engagement and consultation activities with impacted landowners and occupiers, stakeholders and the

broader public. This system will be used to ensure communications and notices are delivered in an efficient and timely manner.

The consultation software database will also be used to store any information collected throughout the project's consultation including landowner feedback, agreements and other discussion regarding the proposed pipeline. All concerns and issues raised during consultation activities and correspondence will be documented, along with details of their resolution (where applicable), to ensure feedback and learnings are incorporated into project development and execution.

Furthermore, the database will be updated regularly as additional information becomes available such as any changes to the proposed pipeline alignment, or the details or communications preferences of impacted landowners and occupiers, stakeholders and the broader public. Information will be managed in accordance with privacy arrangements set out in section 8.3.

6.2 Statutory Reporting

Lochard Energy will provide a monthly report (refer Appendix I), delivered within 5 business days of the end of each month, to DEECA via pipeline.regulation@deeca.vic.gov.au containing the previous month's consultation to date with impacted landowners, occupiers, stakeholders and the broader public, and will include specific reference to complaints or negative feedback on the project.

The issue of monthly reports will be undertaken until the completion of the pre-licencing approval process by way of acceptance of the Construction Environment Management Plan and safety management plans. Regulatory reporting will then be made in accordance with the approved CEMP and other management documents.

6.3 Privacy Policy and use of Personal Information

Information, including Personal Information (as defined in the Privacy Act 1988 (Cwth)) collected by Lochard Energy and its agents and contractors in the course of the planning, construction and operating life of the proposed HUGS Pipeline and will be used to facilitate the planning, management and undertaking of the HUGS Pipeline project and otherwise as required or authorised by law or for any purpose for which consent has been given.

Such information may be disclosed, for the purposes mentioned above, including to individuals, organisations and agencies associated with or having regulatory responsibility for any aspect of the project.

Further information about Lochard Energy's information handling practices can be found in its Privacy Policy at:

<https://www.lochardenergy.com.au/wp-content/uploads/2022/03/Privacy-Policy-March-2022.pdf>

6.4 Media Enquiries

All media enquiries related to the proposed HUGS Pipeline will be referred to and managed by Lochard Energy's corporate head office.

7. EVALUATION OF CONSULTATION

Lochard Energy is committed to reviewing the results of its project consultation and considering the perspectives of landowners, occupiers, stakeholders and the broader public on the proposed HUGS Pipeline. Lochard Energy will review compliance with this plan by reviewing actual performance against a commitment register during the course of the project.

7.1 Feedback Process

Lochard Energy has established several channels for feedback to be received from landowners and occupiers, stakeholders and the broader public. These channels are included on the Project Fact Sheet (Appendix B). All enquiries made through these channels will be recorded in the consultation management software.

These channels include:

Email:	info@lochardenergy.com.au
Project hotline:	1800 848 879
Website:	https://www.lochardenergy.com.au/our-projects/
Postal address:	HUGS Pipeline Project, Iona Gas Plant 285 Waarre Road, Port Campbell, Vic, 3269

Upon receipt of an enquiry or complaint from a landowner, occupier, stakeholder or member of the broader public, Lochard Energy will:

- Where relevant, seek to clarify and understand the request or comment;
- Acknowledge the communication and provide an estimated timeframe for a response or immediate feedback where possible;
- Record the communication in the consultation manager software (and subsequently update the register with the resolution);
- Review the request or comment (including investigation if relevant) and provide feedback to the stakeholder within the committed timeframe.

Depending on the particulars of the request or comment, feedback to that person(s) will include:

- Provision of requested information where appropriate, or advice if information is not yet available, or is unable to be shared (i.e. unrelated/commercially sensitive queries);

- Advice regarding consideration of the suggestion/comment and how/if it has been incorporated into the design or execution of the proposed HUGS Pipeline. This may include discussion of alternate solutions to address that person(s) concerns;
- The outcome of complaints, associated investigations and any follow-up actions;
- Agreement/confirmation with the person(s) as to whether further action is required, and any future commitments (such as deferring a particular action to a later stage in pipeline development/execution, where appropriate).

7.2 Timing for Response

Lochard Energy has developed the following set of timing commitments to respond to correspondence with an impacted landowner, occupier, stakeholder or member of the broader public:

- An initial acknowledgement of that person(s) initial communication will be provided within one business day;
- A detailed response will be provided to that person(s) within five business days of the initial communication.

That person(s) would be notified at the time of the request if feedback is not possible within the committed timeframe and an updated timing would be provided.

Should a question about the proposed HUGS Pipeline be received from an impacted landowner or occupier it is expected that the dedicated Landowner Liaison Officer will be able to manage that question. However, should a complaint or complex question or suggestion be received, that correspondence will be escalated to Lochard Energy’s leadership team.

8. FURTHER INFORMATION

8.1 Contact Information

Further information on the HUGS Pipeline project is available by contacting any of the contact details in Table 7.

Table 7: Contact Information

Contact	Role	Contact Details
Lochard Energy	Proponent	info@lochardenergy.com.au 1800 848 879 www.lochardenergy.com.au/our-projects/ Head office postal address: 2 Southbank Blvd Southbank Vic 3006 Port Campbell postal address:

Contact	Role	Contact Details
		Iona Gas Plant 285 Waarre Road Port Campbell Vic 3269
Victorian Department of Energy, Environment and Climate Action	Regulator	Pipeline contact number: 0448 338 643 www.energy.vic.gov.au/about-energy/legislation/regulations/pipelines pipeline.regulation@deeca.vic.gov.au
Energy Safe Victoria	Regulator	03 9203 9700 www.esv.vic.gov.au info@energysafe.vic.gov.au

8.2 Resources and Further Information

The following links provide further information on pipelines, land use and consultation, and may be of interest to impacted landowners, occupiers, stakeholders and the broader public.

Australian Pipelines and Gas Association

- APGA Stakeholder Engagement Guidelines:
<https://www.apga.org.au/sites/default/files/uploaded-content/website-content/stakeholder-engagement-guidelines.pdf>
- APGA Pipeline Corridor Committee – Investigations of land use around pipelines to guide initial location classification under AS/NZS 2885 guidelines:
https://www.apga.org.au/sites/default/files/uploaded-content/website-content/investigations_of_land_use_around_pipelines_to_guide_initial_location_classification_under_as_2885_guideline.pdf

Australian Hydrogen Council

- Resources about hydrogen
<https://h2council.com.au/ahc-resources/>

International Association for Public Participation

- IAP2's Public Participation Spectrum:
<https://www.iap2.org.au/resources/spectrum/>

Next Generation Engagement

<http://www.nextgenengagement.org/publications/>

Energy Safe Victoria

- Gas and Pipeline Infrastructure information on safety and technical regulation:
<https://www.esv.vic.gov.au/industry-guidance/gas/infrastructure-and-pipelines>

Property and Land Titles Victoria

- Victorian Government, Land Transactions Policy and Guidelines
https://vglm.vic.gov.au/assets/documents/VictorianGovernment_LandTransactionsPolicy2022.pdf

Relevant Pipelines Act and Regulations

- *Pipelines Act (Vic) 2005*;
- *Pipelines Regulations (Vic) 2017*.

Australian Standard

- AS/NZS 2885 Pipelines – Gas and liquid petroleum suite of standards.

APPENDIX A - Checklist of Requirements for a Consultation Plan

Requirements for a Pipeline Consultation Plan (s17, Pipelines Act 2005)	Reference to section of this document
1) A consultation plan must:	
a) be prepared in accordance with the regulations; and	<p>The Pipelines Regulations 2017 do not contain any requirements in relation to the preparation of a Pipeline Consultation Plan.</p> <p>The Regulations specify the information to be included in the Notice of intention to enter land for survey and Notice of pipeline corridor, addressed in Section 4.3.</p> <p>Further, Appendix E provides the form of notice for land entry and survey activities. Appendix F provides the form of notice of pipeline corridor.</p> <p>Appendices B, C and D set out materials to be provided to relevant stakeholders regarding the project, pipeline construction and regulatory approvals.</p>
b) set out the information that the proponent is to provide to owners and occupiers of land to whom notice must be given under Division 2 or 3.	<p>Sections 3.3 to 4.7 sets out the consultation methods and process for landowners and occupiers.</p> <p>Section 4 sets out the information for provision to landowners and occupiers.</p> <p>Appendices B, C and D provides communication materials in the form of three fact sheets: Project Overview, Pipeline Construction and Pipeline Regulatory Approvals.</p> <p>Further, Appendix E provides the form of notice for land entry and survey activities. Appendix F provides the form of notice of pipeline corridor.</p> <p>Appendix G provides a number of responses to expected Frequently Asked Questions (FAQ's).</p>
2) The information to be provided to owners and occupiers of land must include	
a) general information about the types of activities to be undertaken by the proponent for the purpose of any survey under Division 2 or the construction and operation of the pipeline;	<p>Section 5 and provide an overview of the survey, construction, operational and rehabilitation activities and associated management plans.</p> <p>Appendix H provides a map containing the proposed pipeline route.</p> <p>Appendix E provides Notices of Intent to Enter land for Survey and land access agreements.</p> <p>Appendix C sets out communication materials for general information about survey, construction, operation, and rehabilitation activities (Pipeline Construction Fact Sheet).</p>
b) information about how potential adverse impacts of the construction and operation of the pipeline on land, health, safety and the environment are to be managed;	<p>Section 5 provides information on how the potential impacts will be managed.</p> <p>Appendix B sets out communication materials regarding management of potential impacts (Project Fact Sheet).</p>
c) details of the procedures that are to be followed under this Act	<p>Section 3 provides the approach that will be taken to consultation with landowners, occupiers, stakeholders and the broader public.</p>

Requirements for a Pipeline Consultation Plan (s17, Pipelines Act 2005)	Reference to section of this document
<p>and any other Act to permit the construction and operation of the pipeline including the procedures for any compulsory acquisition of land.</p>	<p>Section 4 provides a summary of project and consultation stages including those required by the Act to permit construction/operation and for any compulsory acquisition of land. Section 4.7 provides a summary of the regulatory steps and the associated timings for approvals. Appendix D sets out communication materials specific to approvals and easement acquisition (Pipeline Regulatory Approvals Fact Sheet).</p>
3) a statement	
<p>i) advising that owners and occupiers of land may seek independent advice on the pipeline proposal; and</p>	<p>Appendices B and D include a statement advising landowners and occupiers that they are encouraged to seek independent advice.</p>
<p>ii) setting out current contact information for the Department.</p>	<p>Section 8.1 provides the contact information for Lochard Energy, DEECA and ESV Appendices B, C and D provides contact information for the Department</p>

APPENDIX B - HUGS Pipeline and Project Fact Sheet

About the HUGS Project

As Australia's energy market transitions away from coal-fired power generation to renewable energy, energy storage capacity of different technology types is needed to ensure a consistent and reliable supply.

Lochard Energy is the proponent of the Heytesbury Underground Gas Storage (HUGS) Project and the proposed new HUGS Pipeline, which will expand the capacity of the Iona Gas Storage Facility (IGSF).

The HUGS Project is designed to provide additional security of supply and reliability to the growing demands for energy storage in the eastern Australian energy market, which will help support the transition to a lower carbon future.

As the market transitions, we expect that the IGSF will play an increasingly important role, by providing underground storage services to gas-fired power generators, which will be critical in providing back-up supply during periods of low renewable energy generation. This combination of renewable energy, supported by gas-fired power generators and other technologies, will help facilitate a more rapid and smoother transition away from high emitting coal generation.

In the future, there is potential for the HUGS Project to become an underground renewable hydrogen storage project. As such, the HUGS Pipeline is being designed to safely convey both natural gas and hydrogen or a blend of both so that Lochard Energy can maintain the opportunity to explore the repurposing of its underground assets for the safe storage of hydrogen.

The HUGS Pipeline Licence application will include the option to convey both natural gas and hydrogen or a blend of both.

Lochard Energy are actively consulting with local community and landowners and occupiers on the HUGS Project and have established a Community Liaison Committee to engage with community members and other stakeholders.

The HUGS Project is the expansion of the IGSF underground storage capacity to help ensure there is adequate winter gas for generation, provide additional security of supply and reliability to the market, and support Victoria's transition away from coal.

Underground storage capacity of the IGSF will be increased through the development of the existing Heytesbury depleted gas fields. The Heytesbury depleted gas fields are all natural sandstone formations that have had pre-existing natural gas extracted and are therefore ideal as a natural geological reservoir for the storage of gas.

The HUGS Project will develop a new wellsite which will access three depleted gas fields being Mylor, Fenton Creek, and Tregony (referred to as the MFCT wellsite). The current plan is to develop the Mylor field with 1-2 new gas storage well(s).

The new development is expected to provide a further ~7.5% increase in the storage capacity of The IGSF from the Mylor field alone. By increasing this capacity, the HUS Project will help keep the supply of gas secure, reliable and safe for Victoria. The proposed HUGS Project does not involve hydraulic fracturing or 'fracking', a practice that is banned in Victoria. See map below for the location of the proposed wellsite and pipeline in relation to existing infrastructure.



Map showing the Location of the proposed wellsite and pipeline

About the HUGS Pipeline

The proposed HUGS Pipeline is required to transport gas to and from the proposed new wellsite. The HUGS Pipeline will be an extension of The IGSF's existing pipeline network.

The preferred HUGS Pipeline route will be a 5.3 km 300mm diameter underground pipeline from NPPS to the MFCT wellsite. The HUGS Pipeline will then connect into the existing NPPS – Iona gathering line.

The HUGS Pipeline will be bidirectional, which allows gas to be injected into wells for storage, and then from the wells to Iona for reprocessing and export.

Pipeline construction timing

Planning for the HUGS Pipeline is currently in the early stages and subject to regulatory approvals and market requirements.

At this stage, the proposed timing for construction is:

- **Start:** Quarter 4 2024
- **Complete:** End Quarter 1 2025

It is intended construction will take place over the summer months to avoid weather-related delays and impacts.

Once the necessary project approvals have been granted, further detail regarding dates and schedules will be provided. Lochard Energy will continue to provide landowners, occupiers, stakeholders and the local community with key updates to the HUGS Project and Pipeline.

Regulatory approvals

The HUGS Pipeline is subject to several regulatory approval requirements prior to any works commencing and the primary legislation governing construction are the Pipelines Act 2005 (Vic) and the Pipelines Regulations 2017 (Vic). The Pipelines Act is administered by the Department of Energy, Environment and Climate Action (DEECA) and Energy Safe Victoria (ESV).

Construction and installation of high transmission pipelines in Victoria require Ministerial approval in the form of a Licence to Construct and Operate a Pipeline. Prior to obtaining a Pipeline Licence, Lochard Energy is required to develop a Pipeline Consultation Plan (PCP) that must be approved by the Victorian Minister for Energy and Resources. The PCP for the proposed HUGS Pipeline is available at <https://www.lochardenergy.com.au/our-projects/>

The PCP provides information on how Lochard Energy will consult with landowners, occupiers and other key stakeholders about the proposed pipeline and meet the consultation requirements laid out in the legislation and regulations. Certain consultation activities required by the Pipelines Act, such as giving Notice of Intention to Enter Land for Survey and Notice of Pipeline Corridor, and Notice of Pipeline Licence Application, cannot commence until an approved PCP is obtained.

Further information on the regulatory approvals required for the HUGS Pipeline is provided in the HUGS Pipeline Regulatory Approvals Overview fact sheet.

Impact of the HUGS Pipeline

Lochard Energy is committed to supporting sustainable practices and strives to ensure that at a minimum, it complies with Victorian legislation regarding health, safety and environmental considerations on its projects.

Potential adverse impacts for example on land, health, safety and the environment listed in the Pipelines Act, will be systematically identified during the consultation process through desktop studies and on-the-ground assessments, to reduce risk so far as is reasonably practicable.

To minimise the impact the proposed HUGS Pipeline might have on land, health, safety, the environment, landowners, occupiers, stakeholders and the local community, Lochard Energy must develop and comply with several impact management plans. All these plans, other than Property Management Plans, will be reviewed and monitored by Victorian regulatory authorities including DEECA and ESV. Construction of the pipeline may only commence once the relevant impact management plans are approved.

The management plans for the HUGS Pipeline will include:

- **Property Management Plan:** This is prepared for individual parcels of land with impacted landowners and occupiers, and identifies concerns such as access, amenity, commercial considerations and environmentally sensitive areas.

- **Cultural Heritage Management Plan:** This will provide detail of the proposed construction methodologies required to avoid or minimise impacts from construction and ongoing operation on sensitive cultural heritage areas. This plan is prepared in consultation with the relevant Registered Aboriginal Party.
- **Environmental Management Plan:** This will identify sensitive environmental areas and detail the construction and operational methodologies to avoid or minimise environmental impacts. This plan includes a HDD Management Plan, should horizontal directional drilling be required.
- **Construction Safety Management Plan:** This will detail the systems and processes to be implemented during construction, including hazard alert protocols, incident reporting, safety meetings and hazard analysis processes.
- **Operations Safety Management Plan:** This will provide an integrated safety management approach in line with Lochard Energy's existing safety management policies and procedures for pipeline operations.

Community Engagement

Lochard Energy is committed to effective communication with landowners, occupiers, stakeholders and the local community, and will communicate throughout all stages of the proposed HUGS Project to provide information on timeframes and activities, potential impacts, and to understand and address any questions or concerns about the Project.

During periods of construction, Lochard Energy will work to minimise impacts including noise, traffic, dust or other disruptions that may arise. Relevant work methods and operations will be incorporated to reduce community impact.

Lochard Energy will also draw on its Community Liaison Committee (CLC), convened online or at Iona, for advice and feedback on community and landowner engagement for the Project.

Independent Advice

Landowners and occupiers impacted by the proposed HUGS Pipeline Project are encouraged to seek independent advice in relation to dealings with Lochard Energy, should any concerns be held regarding the legal implications of the proposed HUGS Pipeline Project and its potential impact on their land.

Pre-defined and agreed reasonable costs associated with obtaining independent advice provided by legal and professional services firms in relation to the proposed HUGS Project will be met by Lochard Energy.

How to contact us

If you have any questions about this project, please get in touch with Lochard Energy or one of the relevant Victorian regulators.

Lochard Energy

PHONE: 1800 848 879

EMAIL: info@lochardenergy.com.au

WEBSITE: <https://www.lochardenergy.com.au/>

POST: Iona Gas Plant, 285 Waarre Road, Port Campbell, Vic, 3269

Victorian Department of Energy, Environment and Climate Action (DEECA)

PHONE: 0439 799 598

EMAIL: pipeline.regulation@deeca.vic.gov.au

WEBSITE: energy.vic.gov.au/pipelines

POST: PO Box 500, East Melbourne, VIC 8002

Energy Safe Victoria (ESV)

PHONE: 03 9203 9700 or 1800 800 158 (free call)

EMAIL: info@energysafe.vic.gov.au

WEBSITE: <http://www.esv.vic.gov.au/>

POST: PO Box 262, Collins St West, VIC 8007

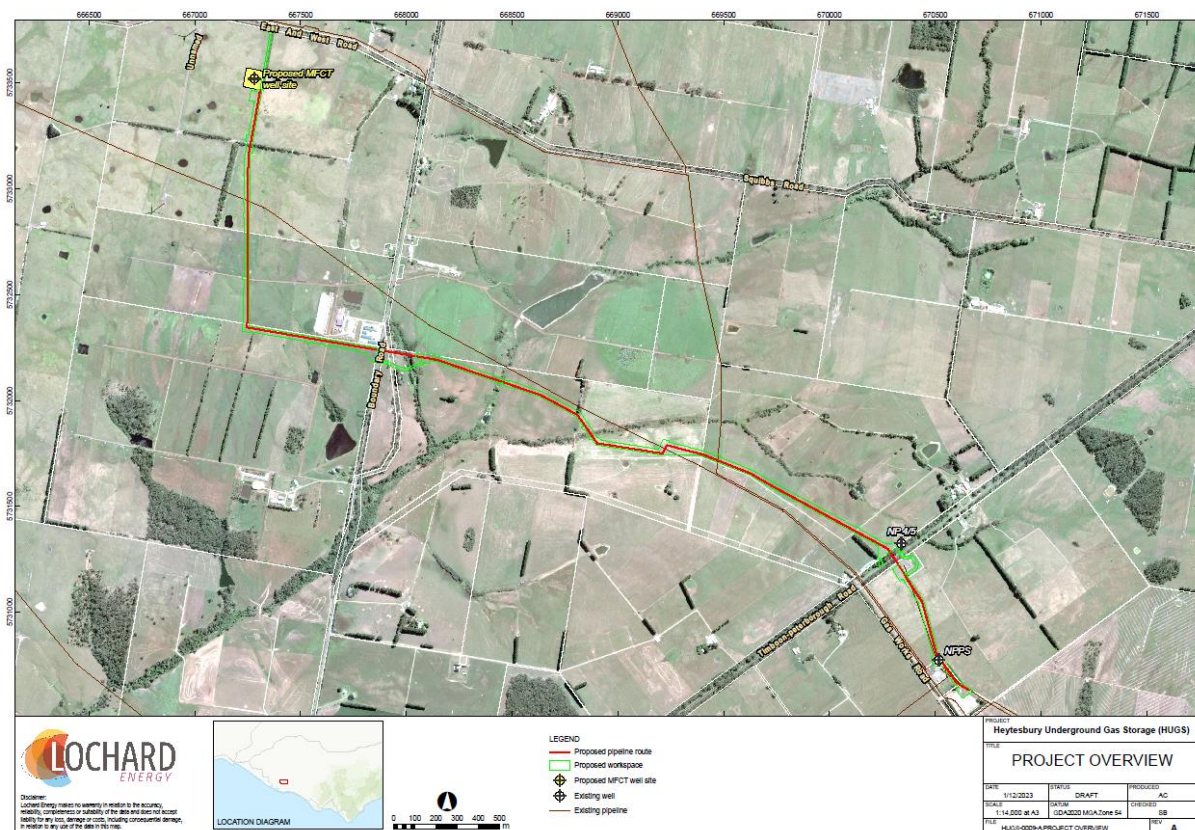
APPENDIX C - Fact sheet: Pipeline Construction Process

Pipeline construction - what's involved?

Lochard Energy is proposing to undertake the Heytesbury Underground Gas Storage (HUGS) Project. A key component of the HUGS Project is the construction of a new 5.3 km 300mm diameter underground gas pipeline, referred to as the HUGS Pipeline.

The HUGS project will develop a new wellsite which can access three depleted gas fields being Mylor, Fenton Creek and Tregony. This site is referred to as the MFCT wellsite. The current plan is just to develop the Mylor field with 1-2 new gas storage well(s).

See map below for route of the proposed HUGS Pipeline.



This fact sheet provides an overview of each stage of the construction process and is intended to inform landowners and occupiers, stakeholders and the broader public about the potential impact of the proposed HUGS Pipeline.

PIPELINE CONSTRUCTION OVERVIEW

Landowner and occupier engagement

Meetings will be held with landowners, occupiers and other stakeholders who are expected to be directly impacted by the proposed HUGS Pipeline.

The meetings will be held either face-to-face or virtually to negotiate access to private and public property for pipeline construction, operation and maintenance activities.

These meetings will address the impacts the pipeline may have and how these will be managed, as well as access considerations, route optimisation and compensation agreements.

Land Surveys

Land surveys will be conducted along the proposed pipeline route to obtain data and knowledge, including but not limited, to cultural heritage, geotechnical, environmental and social considerations. These surveys will inform the planning for the pipeline's construction, operation and rehabilitation.

Land surveys typically involve a small team (generally up to five people) accessing a property by foot or in a light vehicle. Some equipment may be used as part of the surveys, including surveying and testing equipment (such as probes to measure electrical conductivity of soil or a small drill to collect soil samples).

Some land surveys will also require photography that will be used to map out assets such as fences, dams or other existing service utilities.

Landowners and occupiers will be informed about the land surveys proposed to be conducted on their land and Lochard Energy will seek to reach agreement regarding access to conduct these surveys. The landowners and or occupiers will have the opportunity to provide feedback on timing and access in order to avoid disruption to a property's operation, or to avoid impact to a certain location of a property. If Lochard Energy is unable to obtain agreement to enter the land for the purposes of a land survey, Lochard Energy may apply to the Minister for Energy and Resources for consent to enter the land under Section 22 of the Act.

Work areas

Preparation for the proposed HUGS Pipeline easement and associated work areas, referred to as Right of Way (ROW), will be clearly identified. These work areas, including areas to stockpile lengths of pipeline and other pipeline materials, will be identified in collaboration with impacted landowners and occupiers.

A typical pipeline ROW width is generally 20-30m. However, the exact width of the ROW for the HUGS Pipeline will be determined by surveys, feedback from landowners and other construction considerations informed by the preparation of impact management plans.

Clear and grade

Pipeline construction activities can commence once all regulatory approvals and landowner agreements are reached.

Clear and grade, the first physical step involved in a pipeline's construction, involves the preparation of the pipeline easement and associated work areas by using excavators, bulldozers and graders. Topsoil and vegetation are stockpiled to assist post-construction rehabilitation works.

Stringing

Lengths of steel pipe are stockpiled in work areas before being transported along the ROW. The pipeline lengths are then laid end-to-end next to the pipeline trench in preparation for welding and installation.

Welding

Pipe lengths are welded together prior to lowering the pipeline into the prepared trench. Pipeline welds are inspected using x-ray or ultrasonic equipment.

Fire restrictions are always observed during welding activities to ensure fire safety.

Trenching

Pipe trenching machines and excavators are used to dig the trench along the proposed pipeline route. Any subsoil is removed and placed on the side of the trench and will be used at a later stage to bury the pipeline.

Trenchless construction

Trenchless construction using specialist Horizontal Directional Drilling (HDD) equipment is used when traditional trenching methods are deemed unsuitable and enables the pipeline to navigate away from areas of environmental sensitivity or existing infrastructure.

HDD technology inserts the welded pipeline into a tunnel prepared by HDD equipment.

Padding and lowering-in

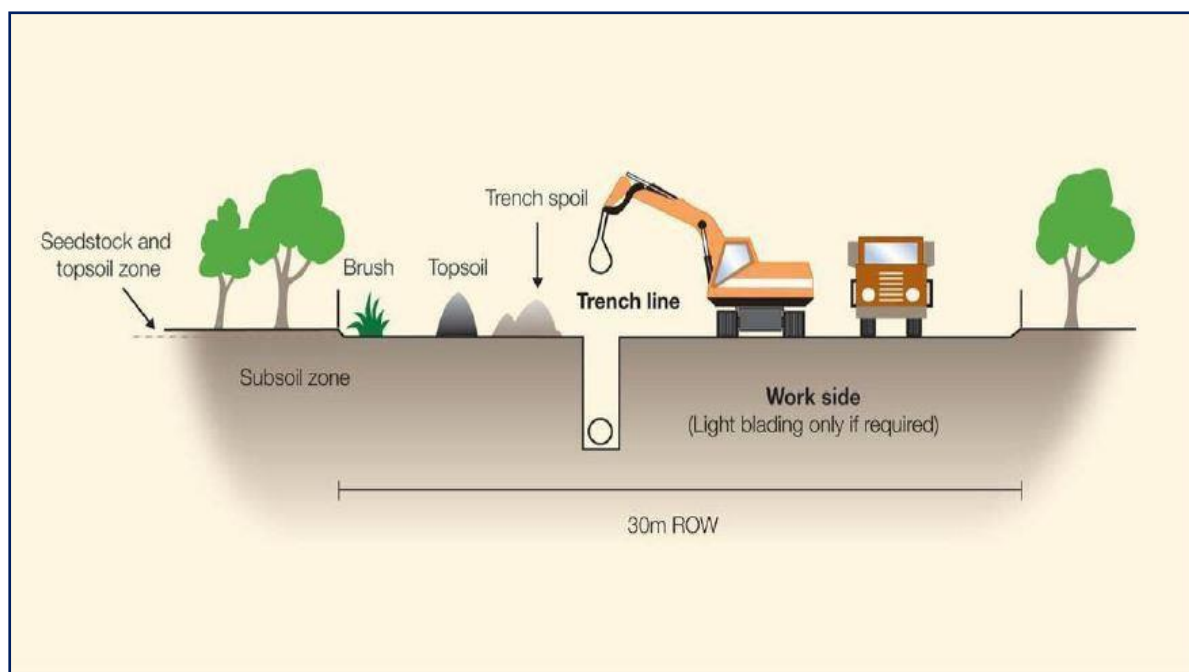
The trench is padded with sand or existing materials and the pipeline is lowered into the trench using heavy machinery equipment including side-booms. The pipeline is lowered into the trench following a rigorous quality assurance process.

Backfilling

Open trenches are backfilled with suitable fill material so that the coated pipeline is then completely buried - apart from the two above-ground locations i.e. at the start and end points of the pipeline.

The stockpiled topsoil is then reinstated over the buried pipeline to match the contour of the land and to ensure pastures can be rehabilitated.

The below diagram demonstrates a typical pipeline Right Of Way (ROW):



Hydrotesting

Hydrotesting is the final test of a pipeline to ensure the pipeline is ready for operation. In this process, water is pressure tested through the pipeline to check for leaks and marks the final stage in the quality assurance process.

Rehabilitation and land care

Rehabilitation of the ROW is an essential part of a pipeline's lifecycle and a proponent's commitments to regulatory requirements and technical obligations under Australian Standard AS2885.

Any disturbed areas must be reinstated to their former state including erosion control and recontouring to match the existing topography and environment. Topsoil conserved during construction is used to assist in pasture regrowth.

Where necessary, rehabilitated areas can be kept fenced during this period to prevent damage by stock and ensure successful rehabilitation.

Signage

Signage is placed along the pipeline alignment at regular intervals and informs landowners of the location of the underground pipeline.

Contact information for the relevant pipeline owner and Dial-Before-You-Dig is included on the pipeline signage.

Decommissioning

A licensed pipeline must be decommissioned in accordance with AS2885, the Australian Pipelines and Gas Association's Environmental Code of Practice and the approved pipeline decommissioning plan.

The Pipelines Act requires this decommissioning plan to be approved by the relevant regulatory authority. An environmental risk assessment process that identifies any potential effect on the environment and other uses or users of the easement should support decommissioning preparation.

If the decommissioned pipeline is left in place, appropriate measures will be taken to prevent contamination of soil or groundwater and to avoid land subsidence impacts.

More information

Should you require further information on the pipeline's construction, please contact Lochard Energy or one of the pipeline regulators, the Department of Energy, Environment and Climate Action or Energy Safe Victoria.

Lochard Energy

PHONE: 1800 848 879

EMAIL: <mailto:info@lochardenergy.com.au>

WEBSITE: <https://www.lochardenergy.com.au/>

POST: Iona Gas Plant, 285 Waarre Road, Port Campbell, Vic, 3269

DEECA (Department of Energy, Environment and Climate Action)

PHONE: 0439 799 598

EMAIL: <mailto:pipeline.regulation@deeca.vic.gov.au>

WEBSITE: energy.vic.gov.au/pipelines

POST: PO Box 500, East Melbourne, VIC 8002

ESV (Energy Safe Victoria)

PHONE: 03 9203 9700 or 1800 800 158 (free call)

EMAIL: <mailto:info@energysafe.vic.gov.au>

WEBSITE: <http://www.esv.vic.gov.au/>

POST: PO Box 262, Collins St West, VIC 8007

APPENDIX D - Fact Sheet - Regulatory Approvals

HUGS Pipeline regulatory approvals Overview

Lochard Energy is proposing to undertake the Heytesbury Underground Gas Storage (HUGS) Project to increase the underground gas storage capacity of the Iona Gas Storage Facility (IGSF). A key component of the HUGS Project is the construction of a new underground gas pipeline, referred to as the HUGS Pipeline.

In the future, the HUGS Project could become a hydrogen storage project. The HUGS Pipeline is being designed to safely convey both natural gas and hydrogen or a blend of both.

The Pipeline Licence application for the HUGS Project will be an application to transport both natural gas and hydrogen or a blend of both.

This fact sheet provides an overview of the relevant regulatory approvals required for the HUGS Pipeline.

HUGS Pipeline overview

The preferred route for the proposed HUGS Pipeline is a 5.3 km 300mm nominal diameter underground pipeline that will run from the North Paaratte Production Station (NPPS) to the Mylor, Fenton Creek and Tregony (MFCT) wellsite (refer to map below).



Map showing project location

The HUGS Pipeline will connect into the existing NPPS – Iona gathering line. The pipeline will be bidirectional, which allows gas to be transported to wells for injection and then from the wells to Iona for reprocessing and export.

Pipeline approvals

The proposed HUGS Pipeline is subject to regulatory approvals prior to any works commencing.

The primary legislation governing the construction of the pipeline is the Pipelines Act 2005 (Vic) and the Pipelines Regulations 2017 (Vic).

The Pipelines Act is administered by the Victorian Department of Energy, Environment and Climate Action (DEECA) and Energy Safe Victoria (ESV). DEECA and ESV are the regulators of matters of health, safety and environment (HSE) on Victorian pipeline projects.

Other relevant approvals that are administered by the Victorian Government and required for the pipeline to proceed may include those under the:

- Aboriginal Heritage Act 2006 (Vic);
- Flora and Fauna Guarantee Act 1998 (Vic);
- Road Management Act 2004 (Vic);
- Heritage Act 2017 (Vic);
- Catchment and Land Protection Act 1994 (Vic); and
- Country Fire Authority Act 1958 (Vic).
- Land Acquisition and Compensation Act 1986 (Vic)

Some of these regulatory approvals will include public notification and an opportunity for the public to review and provide comments on aspects of the Project.

Pipeline Consultation Plan (PCP)

Construction and installation of high transmission pipelines in Victoria require Ministerial approval in the form of a Licence to Construct and Operate a Pipeline. Prior to obtaining a Pipeline Licence, Lochard Energy is required to develop a Pipeline Consultation Plan (PCP) that must be approved by the Victorian Minister for Energy and Resources

A PCP demonstrates how Lochard Energy will consult with landowners and occupiers about the proposed pipeline and meet the consultation requirements laid out in the legislation and regulations.

Certain consultation activities contemplated by the Pipelines Act 2005 (Vic), such as giving Notice of Intention to Enter Land for Survey and Notice of Pipeline Corridor, as well as Notice of Pipeline Licence Application, cannot commence until an approved PCP is in place.

To minimise the impact that the proposed HUGS Pipeline may have on landowners, occupiers, stakeholders and the local community, Lochard Energy must develop and comply with several impact management plans including:

- Cultural Heritage Management Plan;
- Environmental Management Plan;
- Construction Safety Management Plan; and
- Operations Safety Management Plan.

All of these plans, other than Property Management Plans, will be reviewed and monitored by Victorian regulatory authorities including DEECA and ESV. Construction and operation of the pipeline may only commence once the relevant impact management plans are approved.

Community engagement

Lochard Energy is committed to effective communication with landowners and occupiers, stakeholders and the local community. Lochard Energy will communicate throughout all stages of the proposed HUGS Pipeline to provide information on timeframes and activities, potential impacts, and to understand and address any questions or concerns about the pipeline.

During periods of construction, Lochard Energy will work to minimise impacts including noise, traffic, dust or other disruptions that may arise. Relevant work methods and operations will be incorporated to reduce community impacts.

Lochard Energy will also draw on its Community Liaison Committee (CLC), regularly convened online or at the Iona Gas Plant, for advice and feedback on community and landowner engagement for the pipeline.

Independent advice

Landowners and occupiers impacted by the proposed HUGS Pipeline are encouraged to seek independent advice in relation to dealings with Lochard Energy, should any concerns be held regarding the legal implications of the proposed HUGS Pipeline and its potential impact on their land.

Predefined and agreed reasonable costs associated with obtaining independent advice provided by legal and professional services firms in relation to the proposed HUGS Pipeline, will be met by Lochard Energy.

Easement agreements, acquisition and compensation

Lochard Energy will seek to establish agreements with landowners and occupiers for construction and operation. These agreements will have two main elements:

- 1) Options for temporary workspace areas and/or other licencing arrangements in order to construct the new pipeline;
- 2) Options for easement and/or purchase of an easement with the owner of any private land for the purposes of the pipeline installation and operations. An easement is an agreement registered on a title of the property that sets out the rights of a pipeline owner/operator to install, operate and maintain the pipeline and also defines the restrictions on the landowner or occupier in the area of the easement.

Lochard Energy would seek to purchase easements from affected landowners and finalise agreements for temporary workspace once confirmation of the proposed HUGS Pipeline alignment has been reached.

Lochard Energy is committed to dealing with all affected landowners and occupiers in an open and respectful manner and providing fair and equitable compensation in reaching agreement for the proposed easement and temporary workspace areas. Compensation will be negotiated in accordance with the relevant legislation. It should be noted that it is Lochard Energy's strong preference to reach mutual agreement and compulsory acquisition would only be considered in the event that negotiations have been undertaken as far as reasonably possible and agreement is still not reached.

The Pipelines Act 2005 (Vic) includes provisions which allow a proponent to apply to the Victorian Minister for Energy and Resources, responsible for the Pipelines Act 2005 (Vic), to compulsorily acquire an easement required to construct and operate a pipeline, should negotiations with landowners be unsuccessful. The proponent may seek to proceed with a compulsory acquisition process six months from the initial provision of the Notice of Pipeline Corridor. Landowners and occupiers will be provided advance notice of any such activity commencing.

The Landowner and/or Occupier has the option to make a submission to the Minister for Energy and Resources regarding the proponent's application during the process of compulsory acquisition. Easement acquisition by the HUGS project will be in accordance with regulatory requirements including the Land Acquisition and Compensation Act 1986.

More information

Should you require further information on the pipeline's regulatory approvals, please contact Lochard Energy or the relevant Victorian regulator.

Lochard Energy

If you have any questions about this project, please get in touch with our project team.

PHONE: 1800 848 879

EMAIL: <mailto:info@lochardenergy.com.au>

WEBSITE: <https://www.lochardenergy.com.au/>

POST: Iona Gas Plant, 285 Waarre Road, Port Campbell, Vic, 3269

DEECA (Department of Energy, Environment and Climate Action)

PHONE: 0439 799 598

EMAIL: <mailto:pipeline.regulation@deeca.vic.gov.au>

WEBSITE: energy.vic.gov.au/pipelines

POST: PO Box 500, East Melbourne, VIC 8002

ESV (Energy Safe Victoria)

PHONE: 03 9203 9700 or 1800 800 158 (free call)

EMAIL: <mailto:info@energysafe.vic.gov.au>

WEBSITE: esv.vic.gov.au

POST: PO Box 262, Collins St West, VIC 8007

APPENDIX E - Template Notice of Intention to Enter Land for Survey

For Private Land To: [Name and address of the owner or occupier of the land (as the case requires)]]

For Crown Land To: [Name and address of Crown Land Minister/other managing authority or the name and address of any occupier]

Land: INSERT SPI Certificate of Title: Volume INSERT Folio INSERT

Parish: Corangamite Municipality: Paaratte

Address: INSERT PROPERTY ADDRESS

Re: Notice under Section 19(1) of the Pipelines Act 2005 to owners and occupiers of land of intention to enter land for survey.

In accordance with Section 19(1) of the Pipelines Act 2005 (the Act), **Lochard Energy (Iona Operations) Pty Ltd (ACN 608 441 729) of Level 10, 2 Southbank Blvd, Southbank, Vic, 3006 (Lochard Energy)** hereby gives you Notice of its Intention to enter your Land for the purpose of a survey.

In accordance with Section 19 of the Act and Regulation 6 of the Pipelines Regulations 2017 (the Regulations), this Notice also contains the following information, and is accompanied by approved project information.

Intended use of the proposed pipeline

Lochard Energy is proposing to construct and operate a new gas pipeline as part of the Heytesbury Underground Storage (HUGS) Project. The HUGS Project involves increasing the underground gas storage capacity of the Iona Gas Storage Facility (IGSF) located near Port Campbell, Victoria through the development of existing depleted gas reservoirs within the Petroleum Production License (PPL) areas held by Lochard Energy (refer Figure 1). This development requires a new gas pipeline to link these fields to existing infrastructure. Lochard Energy is acting, in respect of the HUGS Project in its capacity as trustee of the Lochard Energy (Iona Operations) Trust ABN 25 151 811 449.

In the future, the HUGS Project could potentially become a green hydrogen storage project. The HUGS Pipeline is being designed to safely convey both natural gas or hydrogen or a blend of both.

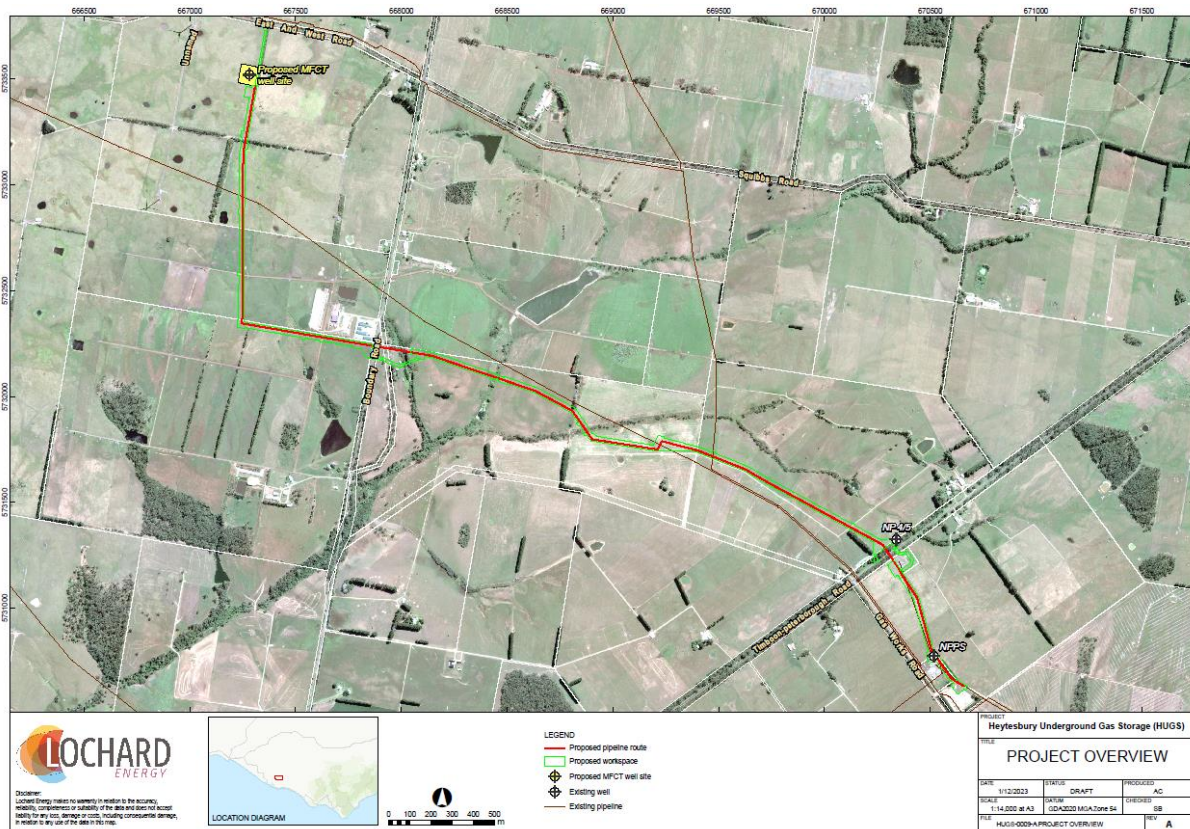


Figure 1: Map of proposed HUGS Pipeline

The preferred HUGS Pipeline route a 5.3 km 300mm diameter underground pipeline from NPPS to the MFCT wellsite. The HUGS Pipeline will then connect into the existing NPPS – Iona gathering line.

The HUGS Pipeline will be bidirectional, which allows gas to be injected into wells for storage, and then from the wells to Iona for reprocessing and export.

The HUGS project will develop a new wellsite which can access three depleted gas fields being Mylor Fenton Creek and Tregony. This site is referred to as the MFCT wellsite. The current plan is just to develop the Mylor field with a new gas storage well.

Planning for the HUGS Pipeline is currently in the early stages and subject to regulatory approval and market requirement.

Details of proposed survey

The survey activities that Lochard Energy intends to conduct include engineering, environmental, cultural heritage, constructability and cadastral surveys as well as any additional specialist surveys required for the design and construction of the proposed pipeline. Details of the different types of survey and the work involved is included in Attachment 1 with this notice.

Name and address of the person or body engaged to carry out the survey for the proposed pipeline

Lochard Energy will be coordinating and managing surveys. Prior to access, you will be notified of the survey to be carried out and the person or body engaged to conduct the survey and a more specific time will be agreed.

List of Authorised Consultants

Name	Contact details
Lochard Energy	Level 10, 2 Southbank Blvd, Southbank, Vic, 3006
Ecology and Heritage Partners	292 Mt Alexander Road, Ascot Vale VIC 3032
Ochre Imprints Pty Ltd	105 Queens Parade, Clifton Hill 3068
Veris	Level 3, 1 Southbank Boulevard, Southbank VIC 3006
National Australian Pipelines Pty Ltd	21 Scholar Drive, Bundoora, VIC 3083
Worley	Level 12, 333 Collins Street, Melbourne Vic 3000
Coffey	Level 1, 436 Johnston Street, Abbotsford Vic 3067
Urbis	Level 10, 477 Collins Street, Melbourne Vic 3000

Map of the proposed pipeline route

A map of the proposed HUGS Pipeline route over your land has been attached to this notice. This map shows:

- The relevant part of the land over which the survey is proposed to be made; and
- The location of the land including the allotment and selection numbers, parish and municipal names and the boundaries of adjacent lands relating to the proposed survey.
- << for Crown land map to show sufficient detail to identify the land >>

Note to owners/occupiers of land

Lochard Energy will take all reasonable steps to reach an agreement with you in relation to entry onto your land for the purpose of conducting a survey for the proposed pipeline, in accordance with Section 20 of the Act.

A Landowner Liaison Officer (LLO) will be in contact with you to discuss access and take all reasonable steps to reach an agreement with you. Landowners and occupiers are encouraged to seek independent advice in relation to dealings with Lochard Energy, should any concerns be held regarding the legal implications of the proposed HUGS Pipeline’s potential impact on their land.

Pre-defined and agreed reasonable costs associated with independent advice provided by legal and professional services firms in relation to the proposed HUGS Pipeline will be met by Lochard Energy.

If Lochard Energy is unable to obtain your agreement to enter land for the purposes of a survey, Lochard Energy may apply to the Minister for Energy and Resources for consent to enter your land under Section 22 of the Act.

Signed by Lochard Energy:

Date:

Attachment 1: Types of surveys

Name of survey	Description of survey activities	Timing of survey activities
<p>Flora and fauna</p>	<p>Assessment of discrete areas by foot or in a light vehicle by a small team (1-3 people) to identify any significant flora and fauna to inform the management any environmental impacts due to the construction and operation of the pipeline.</p> <p>The survey will occur within the mapped targeted survey area shown in the <i>Notice of Intention to Enter Land for Survey</i> provided to you. It is expected the survey will take 1-2 days on an individual property however the duration of the survey will be advised to landowners by the LLO prior to property entry.</p>	<p>Expect that the survey timeframe to take between 10-14 days across the entire corridor depending on the contractors' survey methodology and species survey requirements.</p> <p>Daytime survey is expected with potential to leave camera traps on landowner/occupier's properties overnight if required to monitor nocturnal species on EPBC and FFG list, however this will be confirmed ahead of the survey.</p> <p>There is the possibility for night-time surveys (Mon-Fri 6pm-2am) in landowners and occupiers notifications but only if required by species survey guidelines.</p>
<p>Cultural heritage</p>	<p>Assessment of areas by a small team (4-5 people) by foot or in a light vehicle to inform the management any impacts of the construction and operation of the pipeline to land and artefacts of cultural significance. Hand digging of shallow holes may be required at discrete locations.</p> <p>The survey will occur within the mapped targeted survey area shown in the <i>Notice of Intention to Enter Land for Survey</i> previously provided to you. It is expected that the survey could take 1-3 days and will be undertaken during daylight hours, however the duration of the survey will be advised to landowners by the LLO prior to property entry.</p>	<p>Expect that the survey timeframe to take between 7-10 days across the entire corridor.</p> <p>Daytime survey (Mon-Fri 9am-5pm)</p>
<p>Feature survey</p>	<p>Assessment of areas by a small team (2-3 people) by foot or in a light vehicle, using surveying equipment to create a digital three-dimensional image of physical features that the pipeline may affect (terrain, trees, building outlines, dams, water courses etc). It is expected that the survey could take 1-2 days on an individual property and will be undertaken during daylight hours, however</p>	<p>Expect that the survey timeframe to take between 5-7 days across the entire corridor.</p> <p>Daytime survey (Mon-Fri 9am-5pm)</p>

Name of survey	Description of survey activities	Timing of survey activities
	<p>the duration of the survey will be advised to landowners by the LLO prior to property entry.</p> <p>These measurements and images may be taken from anywhere within a distance of 100m of the proposed pipeline corridor (shown in the <i>Notice of Intention to Enter Land for Survey</i> provided to you). Pegs may be placed in the ground at fence-lines and at other discrete locations (which will be removed at the end of construction or beforehand on request).</p>	
Cadastral survey	<p>A registered land surveyor (1 person) travelling by foot or using a light vehicle to map the property boundaries of the land using surveying equipment. It is expected that the survey could take 1-2 days on an individual property and will be undertaken during daylight hours, however the duration of the survey will be advised to landowners by the LLO prior to property entry.</p>	<p>Expect that the survey timeframe to take between 5-7 days across the entire corridor.</p> <p>Daytime survey (Mon-Fri 9am-5pm)</p>
Soil conductivity	<p>Assessment of areas by a small team (2-3 people) travelling by foot or in a light vehicle, moving to discrete locations of the Property to measure electrical conductivity of soil. This data will inform the pipeline design. The measurement is made using a small hand-held probe inserted approximately 20cm into the ground.</p> <p>The survey will occur within the mapped targeted survey area shown in the <i>Notice of Intention to Enter Land for Survey</i> provided to you. It is expected that the survey could take 1-2 days on an individual property and will be undertaken during daylight hours, however the duration of the survey will be advised to landowners by the LLO prior to property entry.</p>	<p>Expect that the survey timeframe to take between 3-5 days across the entire corridor.</p> <p>Daytime survey (Mon-Fri 9am-5pm)</p>
Hydrology survey	<p>A small team (2-3 people) travelling by foot or in a light vehicle to locations on the Property, if a river or stream crosses the proposed pipeline corridor, to observe and record river or stream conditions.</p> <p>Where rivers or streams are present on the</p>	<p>Expect that the survey timeframe to take between 3-7 days across the entire corridor.</p> <p>Daytime survey (Mon-Fri 9am-5pm)</p>

Name of survey	Description of survey activities	Timing of survey activities
	<p>Land, the area to be inspected will extend up to 50m upstream and 50m downstream of the 'proposed pipeline corridor' shown in the <i>Notice of Intention to Enter Land for Survey</i> provided to you. It is expected that the survey could take 1-2 days on an individual property and will be undertaken during daylight hours, however the duration of the survey will be advised to landowners by the LLO prior to property entry.</p>	
<p>Land condition survey</p>	<p>A small team (2-3 people) will use a drill, typically mounted on the tray of a 4wd utility vehicle, to collect soil samples and test for chemical characteristics to inform the pipeline design and construction approach. The drill samples are less than 20cm diameter, however, can reach a maximum depth of 2m. Because of this maximum depth, a metal detector and water jet may be used to confirm the location of any other ground utilities to avoid causing damage to existing infrastructure.</p> <p>Wastewater created during the use of the water jet is collected in a wastewater tank through a vacuum system. Both the drill holes and water jet holes will be backfilled and surface restored. The survey will occur within the mapped targeted survey area shown in the <i>Notice of Intention to Enter Land for Survey</i> provided to you. It is expected that the survey could take 1-3 days on an individual property and will be undertaken during daylight hours, however the duration of the survey will be advised to landowners by the LLO prior to property entry.</p>	<p>Expect that the survey timeframe to take between 3-7 days across the entire corridor.</p> <p>Daytime survey (Mon-Fri 9am-5pm)</p>
<p>Service location</p>	<p>The purpose of this survey is to confirm the location of underground service utilities (<i>underground infrastructure</i>). This information is required to inform the design of the pipeline such that underground infrastructure is not damaged during construction. This survey will be conducted by a small team of 2-4 people). It is expected that the survey could take 1-3 days on an individual property and will be undertaken during daylight hours, however the duration of the length of survey will be advised to landowners by the LLO prior to property entry.</p> <p>A metal detector and a water jet are used to</p>	<p>Expect that the survey timeframe to take between 3-10 days across the entire corridor depending on the number of services.</p> <p>Daytime survey (Mon-Fri 9am-5pm)</p>

Name of survey	Description of survey activities	Timing of survey activities
	<p>confirm the location of the underground infrastructure. Wastewater created during the use of the water jet is collected in a wastewater tank through a vacuum system. Areas disturbed during this survey will be restored at the completion of the survey.</p> <p>The survey will occur within the mapped Survey Area shown in the map attached to the <i>Notice of Intention to Enter Land for Survey</i> provided to you for this activity.</p>	
<p>Geotechnical</p>	<p>This survey informs pipeline design relative to existing railways, rivers and major roads. It involves the use of a vehicle mounted drill rig (4WD or truck) to establish boreholes measuring 10 to 15cm in diameter and up to 20m in depth and/or the use of a narrow probe to test soil layers and confirm soil stability at discrete locations. This survey will be conducted by a small team of 2-4 people). It is expected that the survey could take 1-2 days on an individual property and will be undertaken during daylight hours, however the duration of the length of survey will be advised to landowners by the LLO prior to property entry.</p> <p>At some locations a PVC pipe will be placed into the hole to keep the hole open and allow for the soil permeability to be assessed. Wherever a PVC pipe is installed, approximately 1m of the pipe will rise above the ground and flagging tape may be tied to the top of the pipe so that it can be easily located. The PVC pipe will be removed at the end of the survey period unless consent is granted for it remaining for use in the construction period. Samples of the drill cuttings will be taken for laboratory analysis and the remaining cuttings will be placed back into bore holes during back-filling and restoration. Survey vehicles may vary in size.</p> <p>The geotechnical survey will occur within the Survey Area shown on the map attached to the <i>Notice of Intention to Enter for Survey</i> provided to you for this activity.</p>	<p>Expect that the survey timeframe to take between 3-10 days across the entire corridor depending on the scope and number of tests required.</p> <p>Daytime survey (Mon-Fri 9am-5pm)</p>

Name of survey	Description of survey activities	Timing of survey activities
Constructability	<p>This survey informs pipeline design with consideration of constructability. The aim is to identify access points, additional workspace areas and to provide construction input to the design.</p> <p>This survey will be conducted by a small team of 2-4 people and may also require light vehicle access. It is expected that the survey could take 1 day on an individual property and will be undertaken during daylight hours, however the duration of the length of survey will be advised to landowners by the LLO prior to property entry.</p>	

APPENDIX F - Template Notice of Pipeline Corridor

Schedule 1 - Notice under section 27 of the Pipelines Act 2005 to owners and occupiers of land in a pipeline corridor

Regulation 7

Pipelines Act 2005
Pipelines Regulations 2017

To: [insert name and address of person(s) who owns or occupies land in the pipeline corridor (see Note 1)]

I Lochard Energy (Iona Operations) Pty Ltd (ACN 608 441 729) of Level 10, 2 Southbank Blvd, Southbank, Vic, 3006 (Lochard Energy) am considering applying for a licence to construct and operate a pipeline over the following land:

[insert a description of the land (including, if appropriate, a sketch showing the relevant part of the land) and title particulars]

A copy of a plan showing the pipeline corridor is attached to this Notice [attach copy of a plan drawn to an appropriate scale showing the pipeline corridor]

The proposed pipeline is: a 5.3 km high pressure 300mm diameter gas pipeline between the North Paaratte Production Station (NPPS) and the Mylor, Fenton Creek and Tregony (MFCT) wellsite. The proposed pipeline will allow natural gas or hydrogen or a blend of both to be transported to wells for injection for gas storage, and then from the wells to the Iona Gas Storage Facility for reprocessing and export.

*Information regarding the proposed pipeline, including the processes that will be followed for obtaining required approvals and details of how [insert name of proponent] proposes to consult with you is also attached.

*Information regarding the proposed pipeline, including the processes that will be followed for obtaining required approvals and details of how [insert name of proponent] proposes to consult with you was given to you with the notice of intention to enter land for survey issued on: [insert date that written notice of intention to enter land for survey was given to owner or occupier under section 19 of the Act]

[*delete the statement that does not apply]

Signature of the proponent:

DATE:

Note

1. A pipeline corridor is a corridor of land within which a pipeline is proposed to be constructed under the **Pipelines Act 2005**. The final route of the proposed pipeline within the corridor is subject to consultation and approval under the **Pipelines Act 2005**.
2. Under section 27(3) of the **Pipelines Act 2005**, this Notice lapses after 12 months from the date of this Notice, unless the Minister administering that Act, extends that period in writing.

APPENDIX G - Frequently Asked Questions

Lochard Energy has provided these answers to potential questions regarding the proposed Heytesbury Underground Gas Storage (HUGS) project.

If you have additional questions that are not answered below, please contact Lochard Energy on 1800 848 879 or email info@lochardenergy.com.au

WHY IS THE PROPOSED PROJECT CALLED HUGS?

HUGS is an acronym of the proposed project's full name, "Heytesbury Underground Gas Storage" project, and makes it easier and quicker to reference. Using acronyms is common practice for project names as they are often lengthy and referenced often.

WHAT IS THE HUGS PROJECT?

The proposed HUGS Project involves identifying depleted underground gas fields to be used for underground gas and potentially hydrogen storage. If suitable underground gas fields are identified, new gas storage wells will be required at purpose built wellsites to inject and produce gas from the fields.

The gas will then be transported back to the Iona Gas Storage Facility via the HUGS Pipeline and Lochard Energy's existing gas pipelines for processing and distribution to the Victorian energy market.

DOES THE PROPOSED PROJECT INCLUDE HYDRAULIC FRACTURING OF THE SUBSURFACE ROCK ("FRACKING")?

No, this activity is banned in Victoria.

DOES THE PROPOSED PROJECT INCLUDE ANY SEISMIC SURVEYS?

The HUGS Project does not require any seismic surveys.

WHAT IS UNDERGROUND GAS STORAGE?

Underground gas storage is a key part of the Victorian and south-eastern Australian gas supply network. The process involves injecting natural gas into depleted underground gas reservoirs from where it can be accessed when demand peaks, particularly in winter, helping to supplement normal supplies.

IS UNDERGROUND GAS STORAGE A COMMON PRACTICE FOR STORING GAS?

Yes, where suitable. Depleted gas fields around Port Campbell in south-west Victoria have been used for gas storage for more than two decades and around the world for more than 100 years.

WHAT ABOUT THE HYDROGEN PIPELINE AND STORAGE?

Hydrogen is an odourless, colourless and lightweight zero-carbon gas. It can be stored, transported and used in a range of applications. Renewable hydrogen is produced when energy from renewable sources such as wind and solar power an electrolyser to convert water into

hydrogen. By storing hydrogen underground, Lochard Energy can play an important role in supporting Victoria's energy transition by providing back-up supply during periods of low renewable energy generation

Lochard Energy are assessing the feasibility of Hydrogen storage in another project called H2RESTORE. Should underground storage of hydrogen be successful the HUGS Project may be converted to hydrogen storage in 10-15 years' time. More information on the H2RESTORE Project can be found here:

<http://lochardenergy.com.au/our-projects/h2restore/>

WHAT IS THE DURATION OF THE PROPOSED PROJECT AND WHEN DOES IT START?

The proposed HUGS Project is currently in the early planning stages and subject to approval. However, the proposed construction timeframe is for some works to start in early 2024, with construction scheduled to be completed in mid-2025.

Construction of the HUGS Pipeline is targeted for the summer period of 2024/25. Dates and schedules will be confirmed once project approvals have been secured. Landowners, occupiers and the community will be kept up to date with project progress.

There is some potential that the construction could be delayed by 12 months depending on market requirements.

WHO CAN I SPEAK TO ABOUT THE PROPOSED PROJECT?

All care and due diligence are taken in the preparation and implementation of any activity related to Lochard Energy's operations. We take community feedback very seriously and welcome the opportunity to directly discuss any queries about the proposed HUGS Project or Pipeline.

Lochard Energy

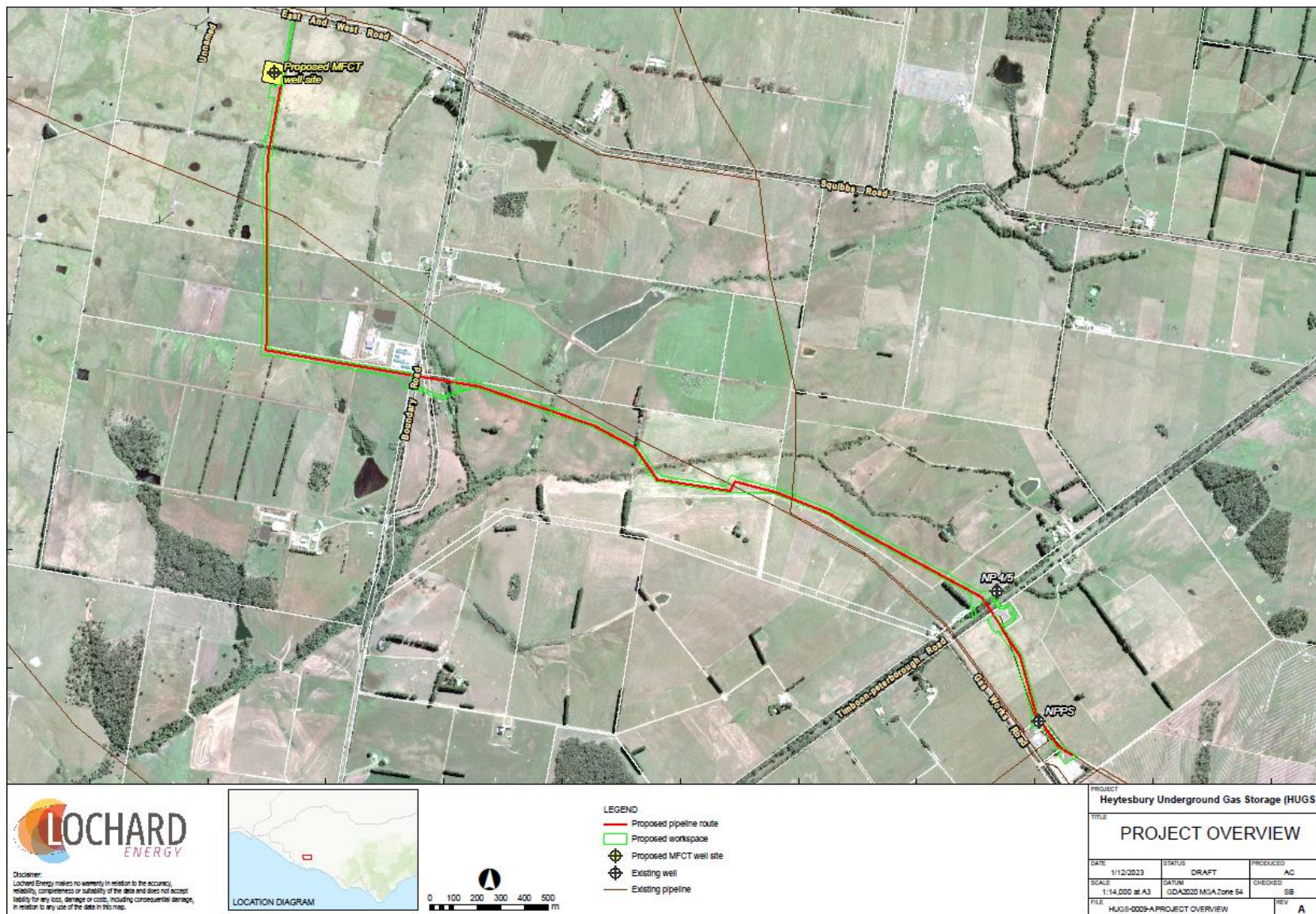
PHONE: 1800 848 879

EMAIL: <mailto:info@lochardenergy.com.au>

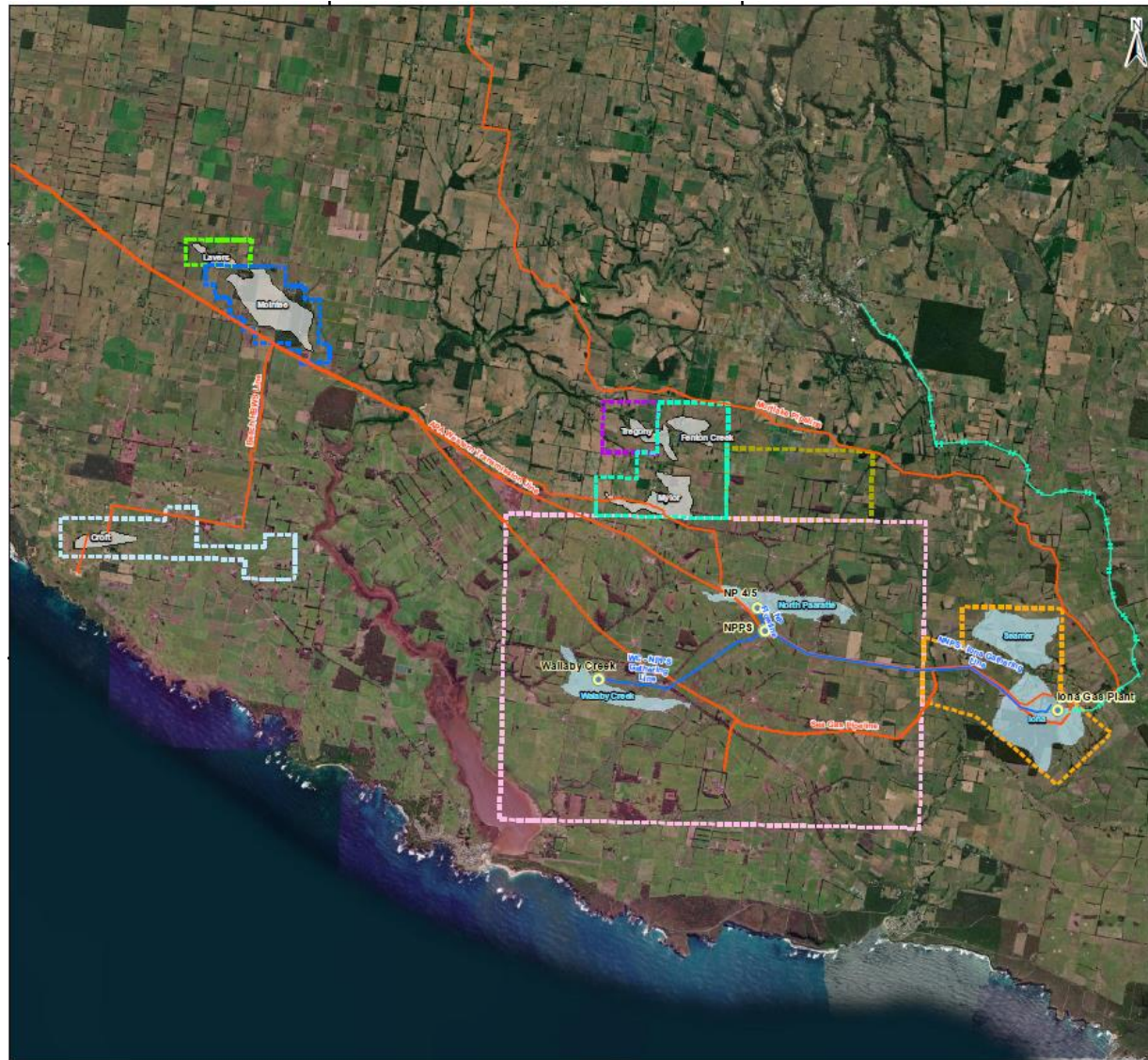
WEBSITE: <https://www.lochardenergy.com.au/>

POST: Iona Gas Plant, 285 Waarre Road, Port Campbell, Vic, 3269

APPENDIX H - Map of Proposed Pipeline Alignment



APPENDIX J - Overview of the IGSF network and fields



PROJECT
Heytesbury Underground Gas Storage

DWG TITLE
Lochard Gas Storage and Potential Underground Storage Locations

LEGEND

- Wellsites
- Existing Lochard Pipelines
- Existing Other Pipelines
- Transmission Lines (66kV)
- Operating or Under Development Fields
- Non-Operating Fields

PPL Boundaries

- PPL1
- PPL2
- PPL4
- PPL5
- PPL6
- PPL7
- PPL9
- PPL10

0 1 2 3 4 5 km

LOCHARD ENERGY **PROJECT MANAGEMENT**

DISCLAIMER: This plan was prepared for the purpose and exclusive use of Lochard Storage Pty Ltd. This map is not guaranteed to be free from error or omission. The location of features should not be relied on as exact field locations.

Prepared: GCA020 MSA54

DATE	SCALE	CHECKED
13/04/2022	1:95,000 @ A3	M.Yellenc
STATUS	PRODUCED	APPROVED
DRAFT	V.Kulkarni	D.Smith

DRAWING No:
LOC_HUGS_OVR_046_01H Overview Map